

# SOUTHERN CHESTER COUNTY CONNECTIONS

*Southern Chester County Chamber of Commerce Magazine*

Southern Chester County  
*scccc*  
CHAMBER OF COMMERCE



*Inside*

**53rd Annual Chamber Gala  
Longwood Gardens' New Nursery  
The Outstanding Citizen of the Year**

**ISSUE 4 Spring/Summer 2020**



# Ever- Changing Beauty.

---

## *Spring Blooms*

March 28–May 3

From the vibrant colors of blooming daffodils, tulips, wisteria, and flowering trees that herald the arrival of spring to hundreds of fountain jets and glorious gardens overflowing with blooming annuals and perennials, our Gardens put on an ever-changing display of beauty every day. Step out of your world and into the beauty of ours.

## **Coming Soon**

### *Festival of Fountains*

May 7–September 27



**LONGWOOD  
GARDENS**

[longwoodgardens.org](http://longwoodgardens.org)





*Chester County's Premier Plumbing, Heating and Cooling Company*

Finance a New System Today!

**0%** FINANCING  
*for*  
**72** MONTHS

**\$139**  
*per*  
**MONTH**



On Select Bryant® Heating and Cooling Systems

**Call us today: 610-388-9333**  
**ChaddsfordClimateControl.com**



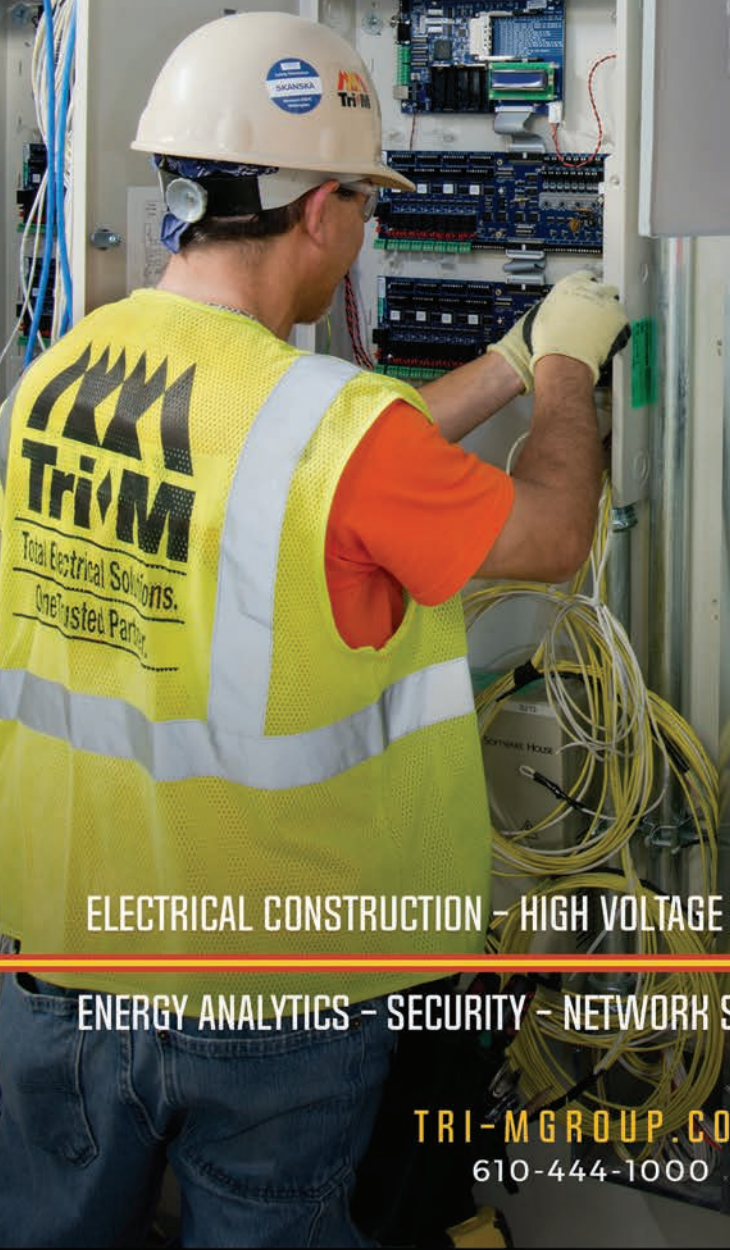
**WHATEVER  
IT TAKES.®**





**EMPOWERING BUSINESS  
WITH SMARTER FACILITIES**

The Tri-M Group, LLC 206 Gale Lane Kennett Square, PA 19348 610.444.1000



**ELECTRICAL CONSTRUCTION - HIGH VOLTAGE - BUILDING AUTOMATION**

**ENERGY ANALYTICS - SECURITY - NETWORK SERVICES - 24/7 SERVICE**

**TRI-MGROUP.COM  
610-444-1000**





Independent Living • Personal Care • Skilled Nursing

# A vibrant community *in bloom*



## A MISSION TO SERVE

This vibrant, senior community providing for the needs of older men and women with Independent Living, Personal Care, and Skilled Nursing. Residents enjoy a homey, comfortable atmosphere with a Quaker mission.

## AN ADAPTABLE APPROACH AND A HEART FOR COMMUNITY

Rather than having residents adapt to Friends Home, we work to adapt our environment to their individual interests and needs. In addition, residents actively participate in various intergenerational programs through the community and enjoy giving back.



Montessori Method of Care throughout the community

Friends Home  
in Kennett

147 W. State Street,  
Kennett Square  
610.444.8785  
FHKennett.org

*Call today to find out how to join the Friends Home Family.*





# CONNECTIONS

## Southern Chester County



### Southern Chester County Chamber of Commerce Board of Directors

#### On the Cover:

Starting front row-left to right:

Erik Gudmundson, 2019 Chairman of the Board (Pegasus Technologies, LLC); Brenda A. Allen, President-Lincoln University; Cheryl B. Kuhn, SCCCC President; Betsy Niedziejko, Chairman Elect (WSFS Bank); James E. Turner, 2020 Chairman of the Board (Chester Water Authority); Christine Zaccarelli (The Crime Victims' Center of Chester County, Inc.); Paula Paisley, Treasurer (Paisley Solutions); Colleen Diercksen (Genesis); Genesis Toledo (Fenstermacher & Company, PC); Lisa A. Long (Nawn & Company, CPAs, Ltd.); Martin M. Harrison, Manager Corporate & Foundation Relations-Lincoln University; Brian Hoover (Borough of Oxford); Claire Mooney (Jennersville Hospital-Tower Health); Ashley Kuhn, Member Services Manager, SCCCC; Brian Hughes (Chester County Technical College High School-Pennock's Bridge); Melissa Dietrich (Longwood Gardens); Michael Moyer (Michael Moyer State Farm Agent); Ronald E. Bauguess (The Tri-M Group, LLC); Eric Kuhn (Pillar Real Estate Advisors)

Photo credit:

Terrance J. Young, MDiv.  
Communications &  
Public Relations Manager  
Lincoln University



## Table of Contents

### Spring/Summer 2020

#### In Each Issue

Chairman's Welcome.....	8
Program & Event Calendar .....	9
A Message from the President .....	10
Advertiser's Index .....	47
SCCCC Business Directory.....	48

#### Featured Articles

Longwood Gardens' New Nursery .....	13
A visit with the Outstanding Citizen of the Year.....	22
Come Play With Us .....	28
53rd Annual Chamber Gala.....	40

#### Meet our Member

The Crime Victims' Center of Chester County .....	18
New Leadership in our Region.....	36
TMACC - the County's Transportation Advocate .....	42
Camp Saginaw: a lifetime of making memories .....	45



# STUDENTS SPEND THEIR DAYS GAINING INDUSTRY SKILLS, EARNING COLLEGE CREDITS AND BUILDING FRIENDSHIPS...

## All at TCHS

**Grooms** the animals of actual customers a few times a month



**Participates** in Future Farmers of America competitions



**Volunteers** at local SPCA to help animals in need



### Looking to connect with the future workforce of Chester County? Here are a few ways that TCHS can help:

- Join our Occupational Advisory Committee (OAC) and help ensure that our programs stay up to date with industry developments.
- Partner with TCHS to establish co-op and internship opportunities.
- Become a partner in our Ascend program, encouraging students to explore advanced manufacturing careers.
- Assist TCHS with mock interview days to hone students' soft skills.
- Participate in industry awareness days that bring you together with students to offer demos, job interview practice and networking.
- Become a sponsor at one of the many TCHS community events.

An equal opportunity employer and educator

## Learn more at [www.tchspennocks.org](http://www.tchspennocks.org)

TCHS0320002





## Letter from the Chairman

**Dear Members and Business Associates,**

**This community is better because of you!** Sandra Day O'Connor once said, *"We don't accomplish anything in this world alone...and whatever happens, is the result of the whole tapestry of one's life and all the weaving of individual threads from one to another that creates greatness."*

The Southern Chester County Chamber's continued success is only because we are a community connected. The success of our Members is inter-related. Through our connections with institutions, locally-based large, mid-size, and small businesses, entrepreneurs, service organizations, local and state government, and most importantly, our consumers, we are building on an environment where people want to live, work and stay.

Our vision for 2020 is to continue to be the premier Member-centric organization in the country. We are focused on doing everything with the success of our Members in mind. We are committed to advocate and act as spokesperson and convener for our membership, our business community, and our professional community. We continue to support the great work of our mushroom, equine, agriculture, and manufacturing industries. You are the backbone of what is great in Chester County.



*James E. Turner*

***Our success is measured in the answer to the question,***

***"Did we do all we could do today to connect our members to the resources they need to succeed?"***

We want you to realize you are not alone, but rather, you have an enormous support system through your fellow Members of the Chamber and beyond: whether your business needs help with IT, HR, IBC, international business development, transportation, succession planning, new technology development, internships from colleges and universities, direct connects to the planning commission, transportation, economic development and the list goes on. We are your connection to these services, and more.

The key is that you must stay connected and utilize our opportunities to showcase your company. Signature events like the Annual Chairman's Gala (nearly 300 business and community leaders present); Scholarship Golf Tournament; Inspirational Breakfast; Municipal Update Breakfast; and, networking opportunities, workshops, and webinars are all designed to connect and grow your business.

2020 is not just a year of focus, but one of growth and sustainability for your Member-centric support team. We are an ever-growing organism of dedicated Members committed to leading, giving, and serving each other and our community.

Thank you for your continued support; we look forward to helping you prosper in the year ahead.

**We Are Connected!**

**James E. Turner**  
**SCCCC Chairman of the Board**  
*(Chester Water Authority)*

**The purpose of life is not to win. The purpose of life is to grow and to share. When you come to look back on all that you have done in life, you will get more satisfaction from the pleasure you brought to other people's lives than you will from the times that you outdid and defeated them."**

*~ Harold Kushner*



# SCCCC Program and Event Calendar

Visit [www.scccc.com](http://www.scccc.com) to learn more

## April 1, 2020

### Women in Business (WIB) Breakfast

Wednesday, April 1, 8:30 - 10:00 am

Member Venue:

Hilton Garden Inn Kennett Square/Longwood

### Business After Hours Member Event

Thursday, April 16, 5:00 – 7:00 pm

Member Host: Lincoln University

Visit [www.scccc.com](http://www.scccc.com) for details

### Network at Noon

Thursday, April 30, 11:30 am – 1:30 pm

Member Venue: The Gables at Chadds Ford

Event Sponsor: Core Family Practice

## May 2020

### Signature Event:

#### 6th Annual Inspirational Breakfast

Event Date and Member Venue to be determined

Visit [www.scccc.com](http://www.scccc.com) for details

### Women in Business (WIB) Breakfast

Wednesday, May 6, 8:30 - 10:00 am

Member Venue: Harvest Ridge Winery Toughkenamon

### “Drive Your Membership” Program

Friday, May 8, 8:30 – 10:00 am

SCCCC Office, 8 Federal Road, West Grove

### Network at Noon! Luncheon

Thursday, May 28, 11:30 am – 1:30 pm

Member Venue: The Gables at Chadds Ford

Event Sponsor: AVAILABLE

## June 2020

### Southern Chester County Municipal Breakfast

Thursday, June 4, 8:00 – 9:30 am

Member Venue: Lincoln University

### Southern Chester County Women’s Golf Association

9-Hole Summer League

OPENING DAY:

Tuesday, June 9, 4:30 pm Reception; 5:00 pm Tee off

Wyncote Golf Club

### Business After Hours Member Event

Thursday, June 18, 5:00 – 7:00 pm

Member Host: Canine Partners for Life

Visit [www.scccc.com](http://www.scccc.com) for details

### Network at Noon! Luncheon

Thursday, June 25, 11:30 am – 1:30 pm

Member Venue: The Gables at Chadds Ford

Event Sponsor: AVAILABLE

## July 2020

### “Drive Your Membership” Program

Friday, July 10, 8:30 – 10:00 am

SCCCC Office, 8 Federal Road, West Grove

### Network at Noon! Luncheon Event

Thursday, July 30 11:30 am – 1:30 pm

Member Venue: The Gables at Chadds Ford

Event Sponsor: AVAILABLE

## August 2020

### Scholarship Golf Tournament & Dinner

Monday, August 3, 11:00 am – 7:00 pm

Member Venue: Radley Run Country Club

Title Sponsors: Exelon Generation · Longwood Gardens

Riley Riper Hollin & Colagreco Attorneys at Law

## September 2020

### Women in Business (WIB) Breakfast

Wednesday, September 2, 8:30 - 10:00 am

Visit [www.scccc.com](http://www.scccc.com) for venue and details

### “Drive Your Membership” Program

Friday, September 11, 8:30 – 10:00 am

Visit [www.scccc.com](http://www.scccc.com) for details

### Business After Hours Member Event

Wednesday, September 16, 5:00 – 7:00 pm

Member Host: Dorset Connects

Visit [www.scccc.com](http://www.scccc.com) for details

### Network at Noon! Luncheon

Thursday, September 24, 11:30 am – 1:30 pm

Event Sponsor: AVAILABLE

Visit [www.scccc.com](http://www.scccc.com) for venue and details





## A Message from the President

### Your Success Is *Our* Business

**Members and Friends,**

As we enter our busy spring season, I can't help but look back at the first quarter of the year and smile. What our members say is true – we are active and always have something going on that benefits members – programs, events, meetings, initiatives, and more.

Our leadership was introduced and recognized at the Annual Meeting held in January at Hartefeld National Golf Club. At this event, we recognized Board leadership, presented three member awards: Ambassador of the Year to Christine Gordon – Merrill Lynch, Closer of the Year to Doug Doerfler – Genesis, and Volunteer of the Year to Brian Arencibia and Cliff Masscotte - SERVPRO of Kennett Square/Oxford. Presenting these awards is by far one of my favorite tasks. The 2019 Chairman – Erik Gudmundson (Pegasus Technologies, LLC) presented a report of our accomplishments, we heard from the 2020 Chairman, Jim Turner (Chester Water Authority), who shared the Chamber's vision for this year, and a financial report was shared by the Treasurer, Paula Paisley (Paisley Solutions).



*Cheryl B. Kuhn*

The Chamber held its first Business After Hours in January – with member and friend Kristy Wyatt of Harvest Ridge Winery. We enjoyed joining Kristy and her staff at the Toughkenamon Tasting Room for a fabulous event – 60+ attendees! We also held the first "DRIVE YOUR MEMBERSHIP" program at the Chamber office. Please take advantage of this program – learn how to take your professional success to the next level. And, last but certainly not least, Network at Noon! – our longstanding mid-day networking event that offers members and guests (not yet members) an opportunity to meet new people, reconnect, and build relationships –an excellent use of your time.

Understanding how valuable your time is, have you considered joining one of the Chamber's referral and networking groups? If not, reach out to me to learn about BizNet, G.R.O.W. and CONNECTIONS –three successful referral groups. All groups meet on the first and third Tuesday morning from approximately 7:45 to 9:00 am, at different locations, and, there is no additional fee to participate.

Once you've had a chance to read our spring edition of CONNECTIONS, let me know if you have questions or would like to enjoy a cup of coffee together so we can help you grow your business. E-mail me at your convenience - ckuhn@sccc.com.

**Best regards,**

**Cheryl B. Kuhn, IOM  
President & CEO**

### SCCCC Circle of Champions

— PLATINUM —		
— GOLD —		
— SILVER —		
— BRONZE —		

LEAD · CONNECT · EDUCATE · ADVOCATE





# IT'S JUST A SWING.

## UNLESS IT'S YOUR SWING.

Where you can steal away for twenty minutes to yourself with your favorite new book. With multiple coverage options and add-ons for every situation, you can choose the coverage you want – and protect your much-deserved peace of mind.

For more information, call us at **(610) 932-9350**  
or visit **[www.kviscoe.com](http://www.kviscoe.com)**.

Policies underwritten by Trustgard Insurance Company, Grange Indemnity Insurance Co., Grange Insurance Company, Grange of Michigan\*, Grange Property and Casualty\*. All companies are subsidiaries of the Grange Insurance Company. WE RESERVE THE RIGHT TO REFUSE TO QUOTE ANY INDIVIDUAL PREMIUM RATE FOR THE INSURANCE HEREIN ADVERTISED. \*Not licensed in Pennsylvania.

***KVIS & COE***  
Kimberly Vassal Insurance Services, Ltd.  
& Coe Insurance Services

  
**Grange**  
Insurance®





CONNECTIONS

# Longwood Greenhouse nursery products will soon be

*The newest greenhouse has soft  
enable it to create even more*





# Longwood Gardens' new production facility operational

sophisticated systems that will  
create fabulous floral features



By Ken Mammarella  
Contributing Writer

Longwood Gardens' newest greenhouse has sophisticated systems that will enable it to create even more fabulous floral features, such as larger baskets, taller standards and bloomier chrysanthemums.

The Nursery Production Facility sports technology that adjusts the overall environment, type of light, temperature, shading and length of day in 17 zones in 65,000 square feet of production space. "It replaces ones that are highly, highly inefficient," said Paul Redman, Longwood's president and CEO, referring to energy use and production efficiency.

Longwood currently has 91,300 square feet of greenhouse space. After this facility opens and the least efficient greenhouses are razed, Longwood will have 123,000 square feet.

Redman expects the increase in space to "provide greater attention to and build our collection," including storing plants for displays and more specimens of rare or endangered plants.

Longwood's greenhouses currently cycle through 100,000 pots of 1,300 types of plants each year.

One remarkable example is the blue-poppy (*Meconopsis* 'Lingholm'). "It is the plant that everyone wants to put in the garden but can't," said Jim Harbage, director of floriculture and conservatories. "The holy grail of many gardeners" is also Longwood's most-photographed plant.

"It's a wonderfully clear true blue that's really attractive," he said. Once considered a myth by European and North American gardeners (true-blue flowers are rare), blue-poppies originated in the Himalayas and are sadly almost extinct there.

*Continued on Page 14*

All photos courtesy Longwood Gardens

**Longwood Gardens' new Nursery Production Facility is under construction a few hundred yards from the South Parking Lot. The road in the back is U.S. Route 1, and the adjacent space is a headhouse, for storage and other operations.**

Opposite page top left:

***Digitalis* benefits from more light.**



# Businesses ♥ US

**We lighten your load  
by keeping your books  
under control.**

**Please visit our website for a  
comprehensive list of services  
in addition to:**

**BILL PAY | INVOICING | PAYROLL | INVENTORY |  
BANK/CREDIT CARD RECONCILIATION | GROWTH  
AND PROFIT BUILDING STRATEGIES | CASH FLOW  
MANAGEMENT | QUICKBOOKS® SETUP & TRAINING |  
CLEANUP ACCOUNTING DATA | ACCOUNTS PAYABLE/  
RECEIVABLE MANAGEMENT**



**LANCASTER | 717.341.1738**

**DELAWARE | 302.428.0126**

**KENNETT SQUARE | 610.444.2597**

**[www.paisleysolutions.com](http://www.paisleysolutions.com)**

## Longwood Gardens

*Continued from Page 13*

This heritage explains Longwood's complex protocol used for the last decade. Seedlings are bought from an Alaskan nursery in October, before Alaska is snow-covered. "Like a lot of perennials, they need a cold period," so blue-poppies are chilled for eight to 10 weeks and placed in the greenhouse the first week of January for their "summer": 55-degree days, 45-degree nights, with very bright light.

Longwood's blue-poppies start blooming in early March, ideally in time for the Philadelphia Flower Show. Individual blooms only last three days, Harbage said, and Longwood's display, with plants rotated in and out, lasts at best three weeks. Then the plants are composted, because it is more sustainable to grow them from seed each year.

Blue-poppies are one of Longwood's six signature plants, along with cannas, chrysanthemums, cineraria, clivias and poinsettias. All six are grown in greenhouses.

The chrysanthemums benefiting most from greenhouse care are pampered from a single cutting to yield more than a thousand blooms. The new greenhouse has doors 15 wide, up from 12 feet, 3 inches in the old greenhouse, allowing for bigger plants. Longwood has created a mum with 1,541 blooms, an American record but shy of the world record of about 2,000. A bigger and bloomier mum, however, won't fit through Conservatory doors and would be displayed outside for the Chrysanthemum Festival.

Cineraria do best with a period of 70-degree days and 65-degree nights, followed by a stint below 60 to trigger flower formation, a regimen made easier by the computerized technology in the new greenhouse.

Clivias cannot be grown outdoors in this year, so they are grown under glass as permanent plants. Poinsettias need nine to 10 weeks of 14-hour nights, accomplished best in greenhouses with black-out curtains. Poinsettias and other plants are sometimes pruned and trained to grow like trees, with flowers on a tall single trunk, a technique called a standard. All existing greenhouses but one have a top gutter height of 10 feet, but the new greenhouse has a gutter height of 19 feet, 6 inches. So the new greenhouse allows for growing taller poinsettia standards to lord over the immensely popular A Longwood Christmas.

Construction of the Nursery Production Facility began in February of 2019, and it is scheduled to become operational in May or June. A headhouse adjacent to

*Continued on Page 16*





Above:  
**Blue-poppies are Longwood's most-photographed flower. They're displayed for up to three weeks in March.**

Below:  
**This is a poinsettia standard, meaning it's pruned to look like a tree. Standards almost twice as tall can be nurtured in the new greenhouse.**



## ABOUT CREATIVE

Rooted in experience, built for our clients, grown with purpose.

### Rich History

CREATIVE was founded in 1976, when the firm's founding partners recognized that clients and prospects had lifetime and legacy objectives encompassing both financial and non-financial needs. Over the past forty years, **CREATIVE has built a strong, lasting reputation rooted in our ability to build relationships across a wide range of clients.**

### Private Client Services

- Asset Management
- Wealth Transfer, Trusts and Estate Planning
- Legacy Planning: Preparing the Next Generation
- Wealth Protection and Risk Management
- Business Planning and Succession
- Personal Financial View®

### Corporate Services

- Qualified Retirement Plan Strategies
- Executive Compensation
- Employee Benefits
- Business Succession Planning
- Risk Management
- Key Person Coverage

Build it. Protect it. Create a legacy.



**Stanley E. Minka, CLU®, ChFC®, MSFS®**

📞 302.781.1088    💻 1creative.com

✉️ sminka@1creative.com

Securities, investment advisory and financial planning services offered through qualified registered representatives of MML Investors Services, LLC. Members SIPC. [www.sipc.com](http://www.sipc.com) 16 Campus Boulevard, Newtown Square, PA 19073. CRN202109-253630



# Longwood Gardens

Continued from Page 14

the new greenhouse includes areas for storage and other operations. The facility sits across U.S. Route 1 from the gardens, a few hundred yards from the South Parking Lot and among Longwood's nursery area, which includes research plots, backups for topiaries and trees and shrubs available for landscaping.

Deforche Construct NV, a Belgian greenhouse specialist, created a design that's more efficient in percentage of total space for growing. The tempered glass walls and roof are a big upgrade from double-poly panes. The ability to heat just the floor or benches and low-wattage LED lights (capable of providing different spectrums favored by different plants) together are expected to reduce utility bills, Redman said.

Sensors allow off-site gardeners to check on light, temperature, wind, rain and humidity by phones and other devices, adding oversight to the night gardener who cycles through the Conservatory and greenhouses.

An advanced conveyor system, which Redman compared to the mechanisms used by dry cleaners to move garments around on tracks, is for "our beautiful



*Blue-poppies in another Longwood greenhouse get 55-degree days and 45-degree nights, with very bright light, before they bloom*

and one-of-a-kind hanging baskets." The heavy-duty system, Harbage said, handles baskets up to 5 feet wide and 70 pounds.

Half the facility has a roof that can be opened completely, cooling the interior to the outdoor temperature and exposing plants to full sunlight when desired. It also allows for plants to be acclimated to outdoor conditions before moving them

**the Y**  
YMCA  
FOR YOUTH DEVELOPMENT  
FOR HEALTHY LIVING  
FOR SOCIAL RESPONSIBILITY

**WE'RE HERE WHEN YOU'RE READY**



**Make connections.  
Make a difference.**

When you join the Y, you'll find a place to do what you love. Discover programs and activities that do more than promote better health – they strengthen the bonds of our community.

[ymcagbw.org/join](http://ymcagbw.org/join)

The YMCA is a leading nonprofit committed to strengthening community. Income-based membership is available. Ask us for details.

**KENNETT AREA YMCA**  
101 Race Street, Kennett Square, PA • 610-444-9622  
a branch of the YMCA of Greater Brandywine





*The new greenhouse will allow Longwood to grow bigger chrysanthemums with even more blooms than its current record of 1,541.*

in the outdoor gardens. The other half has a Venlo roof, with vents useful for cooling in the spring and fall. In the summer, there's an evaporative cooling system, which blows air over wet pads, cooling the greenhouse below the outdoor temperature. Such a system is called a swamp cooler in the Southwest. This is needed to grow plants sensitive to high summer temperatures.

Visitors will probably see the first flowers completely grown in the new facility in the spring of 2021, Redman said. Visitors will be able to tour the facility, just like they now can pay for tours of current production facilities and the Main Fountain Garden tunnel system. But staff members first need to get comfortable with the new facility, and Longwood needs to develop the logistics to shuttle visitors between the main gardens and the facility.

Longwood is also doing capital projects on back-of-the-house facilities that visitors don't see.

And officials are planning as early as next year to restore the Conservatory's orchid and banana areas.

The Orchid House displays 200 to 300 of Longwood's 6,000 orchids, with plants replaced three times a week from five orchid-growing houses. Longwood founder Pierre S. du Pont and his wife Alice were charter members of the American Orchid Society and started their orchid collection in 1922.

The Banana House is an original Conservatory feature, with 20 types of bananas and plantains.

**PEGASUS**  
TECHNOLOGIES  
A TECHNOLOGY SOLUTIONS COMPANY

- We match the culture of your organization to the personality of our personnel to be your local IT department.
- Pegasus is proud to support the Southern Chester County Chamber of Commerce.
- Serving PA and Delaware with offices in Kennett Square, Wayne, and Media.

PegasusTechnologies.com • 610.444.8256

**ALCHEMY INSURANCE**  
AGENCY

**We find you the best rates from brands you know & trust.**

**AUTO • HOME • COMMERCIAL • LIFE**

110 E State St., Kennett Square, PA 19348  
**(484) 999-2101**  
www.alchemyinsurance.com

# Crime Victims' Center of Chester County CEO Christine Zaccarelli talks about the mission of the organization

**By Betsy  
Brewer Brantner  
Contributing Writer**

**A** violent crime committed against a person or a loved one will leave an imprint on someone's body and mind forever. The memory can be set off by a smell, a sound, or even a taste. Finding your way back to normal is not an easy task, but helping a victim every step of the way is what

The Chester County Crime Victims' Center—or CVC as they are known in the community—is all about.

"It isn't easy to get through the trauma of a crime, but helping victims heal is one of the key parts of our mission," said Christine Zaccarelli, the CEO of the Chester County Crime Victims' Center.

Zaccarelli explained, "Moving through a trauma can include a whole other world that most victims or their family didn't expect. It includes the legal system; medical needs, which means working with hospitals; and connecting them to other social service agencies to help with



*Christine Zaccarelli*

housing, food insecurity or civil legal needs."

The other key part of the mission is to provide prevention and education to kindergarten through 12th grade students, college students and parents and professionals. Their educators are out in the community almost every weekday providing evidence-based programming to promote prevention and awareness of crime and its impact on the community in Chester County.

Zaccarelli has recently joined the board of Southern Chester County Chamber of Commerce (SCCCC). The agency itself has been a SCCCC member for just over two years.

"The Chamber believes that non-profit representation on the Board is a priority," Zaccarelli explained. "I was very excited to become more involved with such an important organization. This is a great way to network, and market our services. I am honored to be one of the voices on the Chamber representing the Southern Chester County Non-Profit Community."



The agency stresses that they help people of all ages, from children to elders and those in between. Among the specialists there are:

- Victim advocates for children from Kindergarten to 12th grade: Zaccarelli explained, "We spend a lot of our time with children, starting as early as kindergarten or pre-schools."
- Elder advocate specialist: The agency is involved with the Chester County Elder Abuse Task Force. They reach out to seniors through programs at senior centers, work with the department of aging and even go to police stations when needed.

All of the Agency's services are free and confidential. They have two hotlines available 7 days a week, 24 hours a day, 365 days a year that are manned by staff and volunteers. Those numbers are:

**SEXUAL ASSAULT - 610-692-7273**

**OTHER CRIMES - 610-692-7420**

**As a victim of a crime in Pennsylvania, you have the following rights:**

- To receive information concerning available services for victims;
- To be notified of certain significant actions and proceedings pertaining to your case;
- To be accompanied at all public criminal proceeding by a victim advocate, family member or another person;
- In cases involving personal injury crimes, burglary, and crimes relating to driving under the influence which involved bodily injury, the victim may offer prior comment on the potential reduction or dropping of any charge or changing of a plea;
- To offer prior comment on the sentencing of a defendant to include the submission of a written and/or oral victim impact statement;

*Continued on Page 20*



**HOME | AUTO | BUSINESS**

*Providing comprehensive, cost-effective and quality insurance solutions for families and businesses since 1949.*

**1140 WEST LINCOLN HIGHWAY  
COATESVILLE, PA 19320**

**610-384-1980 | Binsured.com**

*"Our clients feel like family."*

—CHIP BREUNINGER, PRINCIPAL  
& JOE REGENSKI, PRESIDENT





# Crime Victims' Center

Continued from Page 19

- To be restored, to the extent possible, to the pre-crime economic status through restitution, compensation, and the return of property;
- In personal injury crimes where the offender is sentenced to a state correctional facility, to be given the opportunity to provide prior comment on and to receive state post sentencing release decisions (work release, parole, pardon, or community treatment center placement) and to be provided immediate notice of escape of the offender;
- In personal injury crimes where the offender is sentenced to a local correctional facility, to receive notice of release of the offender (including work release, furlough, parole, community treatment center placement) and to be provided with immediate notice of the escape of the offender;
- Where the offender is subject to a PFA order and is committed to a local correctional facility for a violation of the order or for a personal injury crime against a victim protected by the order, to receive immediate notice of the release of the offender on bail;
- To receive notice when an offender is committed to a mental health facility from a state correctional institution and of the discharge, transfer, or escape of the offender from the mental health facility;
- To have assistance in the preparation of, submission of and follow-up on financial assistance claims to the Crime Victims' Compensation Program.

In order to provide all of these confidential services it is no surprise that the biggest need for the agency is to secure diversified funding sources.

For more information or to donate to The Chester County Crime Victims' Center, visit their website at: <https://www.cvcofcc.org>. The Chester County Crime Victims' Center is located at 135 - 137 W. Market St., West Chester, PA 19382. The business hours are 9 a.m. to 5 p.m. each Monday through Friday. The office number is 610-692-1926.

## WELDING • MAINTENANCE • FABRICATION

Leading the way with expert welding, mechanical and custom fabrication services for individuals, businesses and industry



- Railings • Platforms • Stairways • Gates
- Custom Fabrications
- Material Handling Systems Installation & Service
- Infrastructure Maintenance & Repairs
- On-site Repairs with our Mobile Welding Units
- Certified Pipe • Structural Aluminum • Stainless
- Metal Sales

*Our Professionally Installed railing systems are designed for Safety, Durability and Aesthetic Appeal!*



• **DEPENDABLE** •

*We're trusted to provide quality services for our local community of small businesses as well as large corporations.*

Office Open Monday thru Friday 8:00 AM to 4:30 PM

**M<sup>2</sup>WELDING**  
**MITCHELL MECHANICAL LLC**

365 Waterway Road • Oxford, PA • 610-932-5002  
[M2Welding.com](http://M2Welding.com)

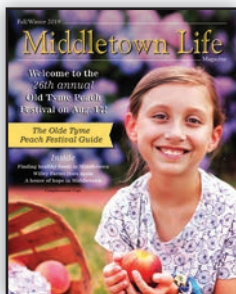


# Chester County PRESS

144 SOUTH JENNERSVILLE RD, WEST GROVE, PA 19390  
www.chestercounty.com

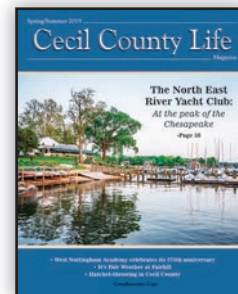
Serving the Chester County business community since 1866  
Your source for local news, government, schools, sports and much more!  
Published every Wednesday. To subscribe call 610-869-5553 ext 10.

## LIFE MAGAZINES

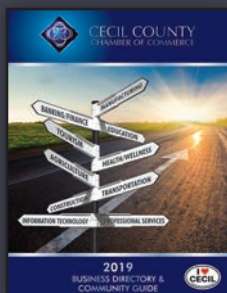


- Landenberg Life • Kennett Square Life
- West Chester & Chadds Ford Life • Newark Life
- Greenville & Hockessin Life
- Middletown Life • Cecil County Life

Each of our Life magazines offer "hyper local" news from each community in the form of features, profiles, history, entertainment and home and garden stories. Our "coffee table" keepsake format with extensive direct mail appeals to a wide variety of advertisers

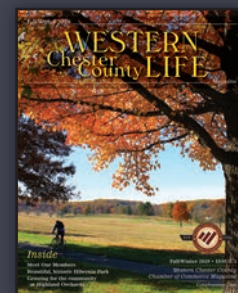


## CHAMBER OF COMMERCE PUBLISHING

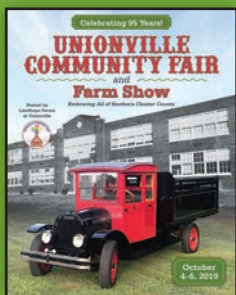


- Southern Chester Chamber of Commerce CONNECTIONS
- Western Chester County Life
- The Oxfordian
- Cecil County Chamber of Commerce Annual Business Directory

Custom tailored magazines that are essential for your local Chamber of Commerce and business community.

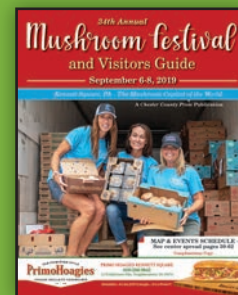


## EVENT & SPECIALTY PUBLISHING



- Mushroom Festival & Visitors Guide
- Unionville Community Fair and Farm Show
- Kennett Run Event Guide
- Middletown Peach Festival
- Brandywine Hospital's Strawberry Festival
- Penn Township Newsletter

We can be the perfect media sponsor to publicize and promote your community event. Each publication is custom designed to your needs.



FOR MORE INFORMATION CONTACT RANDY LIEBERMAN AT  
randyl@chestercounty.com or call 610-869-5553 ext 19



Photo by Chris Barber

*Annalie Korengel stands by the front door of the Unionville Presbyterian Church. She is the pastor of the church.*

# Meet Annalie Korengel, the Southern Chester County Chamber's 2019 Outstanding Citizen



By Chris Barber  
Contributing Writer



The Southern Chester County Chamber of Commerce honored Rev. Annalie Korengel as its 2019 Outstanding Citizen Award winner during the organization's 53rd annual gala in February.

As pastor of the Unionville Presbyterian Church, Korengel follows in the footsteps of Rev. John Ferguson, who was the recipient of the award in 1979.

Korengel, 51, a social activist, spent her youth in Peoria, Illinois, and Minneapolis. She said it was in Illinois that she gained her love and attraction to country life, having spent time on her grandparents' farm. She gained her appreciation for rugged outdoor living, in the cold winds of Minnesota where she lived for a year and a half in her pre-teen years.

As a teenager, when her father was transferred to the Philadelphia area, the family lived in West Chester and she attended the schools of the West Chester School District.

*Continued on Page 24*

# McGRORY INC.

Solid Surface | Granite | Quartz

## Opening the door to self expression.



**Your new project  
awaits...**

A dedication to providing quality products, backed by excellent service, has allowed residential customers and builders in the tri-state area to look to us as their local fabricator.

~Serving Chester County  
Since 1983~

576 Rosedale Road, Kennett Square, PA | 610-444-1512 | MCGRORYINC.COM

# Annalie Korengel

Continued from Page 23

Korengel went on to attend West Chester University where she spent eight years sampling a variety of courses that attracted her attention. She graduated with a degree in English literature. All the while, however, an interest in becoming an emergency medical technician and helping people in need was building.

Korengel went on to earn masters' degrees in divinity, social work, business administration, and human resources from Palmer Theological Seminary.

"I wanted to be a firehouse or hospice chaplain," she said.

Indeed, she serves as chaplain to three police departments and a fire company and is active with hospice initiatives.

Her family's engagement as members of the Unionville Presbyterian Church on Wollaston Road in East Marlborough is reminiscent of happy memories on her grandfather's farm in Illinois. There, she said, the family attended a small rural church very much like Unionville Presbyterian.

When there was an opening in the clergy position at Unionville Presbyterian, she was asked to fill in on a temporary basis, however, "temporary" turned into "get us through Christmas" and then "stay for Easter." She's now

the permanent pastor and administrative head of what is known as "the small church with the big heart."

When she was asked what in her clerical position she is proudest of, she mentioned three things: the coat drive, Family Promise and support of first responders.

Each year, the church sends out a call for coats – new and gently used coats that are distributed to those who need them. Over the years, thousands of coats have been collected and sent on to folks in need.

Family Promise is an initiative Korengel endorsed very early on. Family Promise brings together local churches that open their facilities for a limited time to families who are homeless. The program is supported by many local churches that have pledged to provide a refuge to families in that perilous condition. She said Unionville Presbyterian was the first church to sign on to it.

She is also especially fond of her relationship with local police, whom she steps in to assist when they are faced with serious social and emotional situations.

"They're my guys," she said.

Continued on Page 26

## Mortgage rates remain at historical lows!

*It's time to make your move.*

- Purchases
- Refinances
- New Construction
- Second Homes
- PLUS MORE!



**Pat McRae**  
**Pike Creek Mortgage Services, Inc.**  
**Mortgage Consultant**

**NMLS# 1371733**  
**302.287.5392**

**pmcrae@pikecreekloans.com**

**Experienced.**  
**Trustworthy.**  
**LOCAL.**

Corporate NMLS# 130829



# NEED A/C?

## 0% APR for 60 Months\*

We'll do Whatever it takes® to keep you comfortable



*We Design Comfortable Living*

With flexible financing options, it's easy to invest in your house or respond to an unexpected cooling or heating need without breaking your budget. We're able to offer special financing for your new Bryant® product or system. Our available financing options make it easier for you and your family to stay comfortable all year long.



DISCOVER THE R&D DIFFERENCE

Call Today T. 610-643-4821 | [rdhvac.com](http://rdhvac.com)

\*Minimum \$6,000.00 purchase. Subject to credit approval. Minimum monthly payments required. Monthly payments will vary dependent upon equipment selection. Call for details. All offers valid for new clients and or new estimates on qualifying systems only. Cannot be combined with any other offer.

PA003891



# Annalie Korengel

Continued from Page 24

Deeply committed to an ecumenical ministry, she said she believes diverse religions or branches of institutional faiths have more in common than they have differences between them. In fact, she said that during her ordination ceremony, she incorporated readings and items from various faiths worldwide – not just the Presbyterian liturgy.

“There’s more to bind us than to separate us,” she said.

Korengel lives in West Chester, and is the wife of Gary Lorgus. She has three children: Jamie, age 20; Riley, age 18; and Kayte, age 13.

She received her award at the Southern Chester County Chamber of Commerce Chairman’s Gala, which was held this year on Feb. 22 at Longwood Gardens.

The tradition of identifying an outstanding member of the community began in 1968 when the award was bestowed on the late school administrator, civil rights activist and borough council president Bob Scott. Most recently, the recipients have been Joan Holliday, David Haradon, Leon Spencer, Jim McLeod and Peter Kjellerup.

The award signifies exemplary volunteer efforts, community service, vision, leadership and citizenship of individuals



Photo by Chris Barber

*Annalie Korengel stands beside a bell on the grounds of the Unionville Presbyterian Church that had its origins on a local farm. She said they ring it for special occasions.*

THANK YOU FOR YOUR SERVICE  
DO YOU KNOW A LOCAL HERO WHO IS LOOKING TO PURCHASE OR REFINANCE A HOME?

**QUALIFYING HEROES**

Service Deserves Its Rewards®



Firefighters/EMS



Law Enforcement



Military



Healthcare Workers



Teachers



CONTACT KEN PITTS TODAY!  
FIRST CHOICE MORTGAGE ADVISORS, LLC. NMLS# 528202  
610-637-7325 (PH)  
KPITTS@FCMORTGAGEADVISORS.COM  
WWW.KPITSMORTGAGE.COM





Courtesy photo

*In a recent photo, Annalie Korengel is shown with 1979 Outstanding Citizen John Ferguson, who is a previous pastor of Unionville Presbyterian Church.*

who positively influence the welfare of the Southern Chester County community, said Chamber President and CEO Cheryl Kuhn.

Through the years, the designation has changed from the Man of the Year to the Outstanding Citizen after Mrs. Harold Cooper was chosen in 1971.

Kuhn said the selection process begins with the receipt of nomination letters, which then go to a committee that assembles data. The data is then passed on to a selection -- "discernment" -- committee of recently awarded outstanding citizens.

Many of the people who have been bestowed the honor demonstrate years of contribution to the community. Kuhn said, however, they try to give the designation especially based on actions from the preceding year.

"It's not an easy choice to make. Many people do many things in the community," she said.

Kuhn said that Longwood Gardens was selected as the location of the gala because it offers an elegant setting in a well-known location. She said the environment elevates the prestige of the selection.

The Southern Chester County Chamber of Commerce serves the communities of the Kennett, Unionville and Avon Grove school districts. However, when considering outstanding citizen nominations, the pool extends to the Oxford area as well.



**DITTMER & COMPANY, P.C.**  
**Certified Public Accountants**

**PRACTICAL • PROFICIENT • PERSONABLE**  
 Accounting for real people, real business, real life.  
 Going beyond the tax return year after year.



**Providing Financial Strength  
 to Our Clients**

With convenient offices in **Kennett Square** and **Wilmington**, we are large enough to offer sophisticated solutions that can meet the needs of the most demanding industries, while remaining committed to providing personalized service.

**YOU CAN COUNT ON US!**  
**CONTACT US FOR A FREE INITIAL CONSULTATION**

**DITTMER & COMPANY, P.C.**  
 Certified Public Accountants

930 E. Baltimore Pike • Kennett Square, PA  
 100 W. Rockland Rd, Ste G2, • Montchanin, DE  
 610-444-8200 • [www.dittmerco.com](http://www.dittmerco.com)



# Come play with us

## Take a quick tour of five great member golf clubs in the area

By Ken Mammarella - Contributing Writer

### Hartefeld National Golf Club

1 Hartefeld Drive, Avondale  
610-268-8800; [www.clubcorp.com/Clubs/Hartefeld-National](http://www.clubcorp.com/Clubs/Hartefeld-National).

Sean Vandak, general manager;  
Eric Williams, director of golf.

Since opening in 1994, Hartefeld National Golf Club has hosted PGA Tours and Senior PGA Tour events on its 18-hole Tom Fazio course. The culinary star of the historic fieldstone clubhouse is the Grille & Pub at Hartefeld National. Fazio's Golf Lounge, opening this year, features simulated golf games and a more intimate area for eating and drinking.

ClubCorp bought Hartefeld in 2012, and General Manager Sean Vandak said \$4 million in resulting upgrades include bent grass tee boxes and fairways; all-grass practice facilities and short game area; golf cart fleet and course



Courtesy photo  
*A rendering the simulator at Hartefeld.*



*The picturesque 6th hole at Hartefeld.*

Courtesy photo



maintenance equipment; bunker renovations and upgraded course amenities.

The par 72,6,964-yard course has been named a Top 10 course in Pennsylvania by *Golfweek* and ranked fourth on America's Top 50 Courses for Women by *Golf Digest for Women*. It features dramatic elevation changes and winding paths among old-growth groves, and five tees can bring the yardage down to 5,086. The signature hole is No. 6: "a beautiful hole, hitting over a pond with a view of the clubhouse," said Eric Williams, director of golf. The No. 1 handicap is No. 4. "It requires a precise drive to hit into the green," Williams said, "and the second shot is longer. Plus, the green has a false front that slopes down to the fairway."

"It is a fair test with ample fairway targets on most holes, and very accessible greens," Philadelphia golf writer Phil Sokol says of the course on [www.golfwithphilsokol.com](http://www.golfwithphilsokol.com). "The course's best attribute is its beauty and conditioning."

## Kennett Square Golf & Country Club

100 E. Locust Lane, Kennett Square

610-444-5239; [www.ksgcc.com](http://www.ksgcc.com).

Jason R. Feller, clubhouse general manager;  
Ryan Nuechterlein, head golf professional.

**Kennett Square Golf & Country Club**, founded in 1922, sits on 135 acres. Dining areas include the 1922 Bar, overlooking the 18th hole; the Lounge, with floor-to-ceiling windows on three sides; the covered second-floor deck; and the main dining room. The competition-size pool has a diving board and kid pool, with a screened-in bistro-style eating area and snack bar nearby. For tennis, there are four lighted har-tru courts and three all-weather hard courts. There are four heated and lighted paddle courts.

Scottish architect Donald Ross designed the original nine holes in 1922, followed in the 1930s by the second nine by William Gordon. The par 71 course offers four tees, with yardage from 5,278 to 6,416. The second hole is "widely regarded as our signature hole," the club site says. "No. 2 is a classic example of strategic design. Players can attempt to carry the pond on the right,

*Continued on Page 30*



**Anytime.  
Anywhere.  
Any day ...**

**Mike Moyer, Agent**  
302 W State Street  
Kennett Square, PA 19348  
Bus: 610-444-5454  
[www.moyeragency.com](http://www.moyeragency.com)  
Monday 9am - 6pm  
Tu,W,Th,F 9am - 5:00pm  
Saturday 10am - 12noon

**That's when you can count  
on State Farm®.**

I know life doesn't come with a schedule. That's why at State Farm you can always count on me for whatever you need - 24/7, 365.

**GET TO A BETTER STATE™.**  
CALL ME TODAY.



1101198.1

State Farm, Home Office, Bloomington, IL



**Our Strength.  
Your Numbers.**

It all adds up.



**Nawn and Company, CPA's, Ltd.**

**Great service & attention!**

We continue to help individuals and businesses make sound tax and financial decisions.

Christopher P. Nawn, CPA

[Chris@Nawnco.com](mailto:Chris@Nawnco.com)

Lisa Angst Long, CPA

[Lisa@Nawnco.com](mailto:Lisa@Nawnco.com)

David A. Hellberg, CPA

[Dave@Nawnco.com](mailto:Dave@Nawnco.com)

Jason Homick, CPA

[Jason@Nawnco.com](mailto:Jason@Nawnco.com)

301 Pennsylvania Avenue, Avondale, PA 19311

**610-993-3100**

**[www.NawnCo.com](http://www.NawnCo.com)**



# Golf Clubs

Continued from Page 29

leaving them with a short pitch to an elevated green, which is open in front." The eighth hole, it says, "gives the appearance of being easy but does not play that way and is ranked as the No. 1 handicap hole for that reason." A few holes are named: No. 3 is Turner's Knoll; No. 6 is Willowdale; No. 7 is Devil's Bend; and No. 9 is Black Walnut. Members never need tee times and can always walk the course.

"Kennett's greens are as good as the tour greens we play and the best winter greens in the mid-Atlantic," club member and four-time PGA winner Sean O'Hair says on the site.



Photo courtesy Robert Sparre  
*A picture of a rainbow at the Kennett Square Golf & Country Club. Founded in 1922, the golf and country club sits on 135 acres in beautiful southern Chester County.*

You CAN MAKE **A BIG**  
**DIFFERENCE**  
*in our community!*



## One Service Community

Creating solutions within our community in the areas of:

**Education, Housing  
and Transportation**

Visit one of our meetings:

Thursdays, 6:45 am

The Terrace Restaurant at Longwood Gardens

Individual and Company Memberships Available

[www.longwoodrotary.com](http://www.longwoodrotary.com)

**Rotary**  
Club at Longwood  
SERVICE ABOVE SELF





# TWO GREAT SOLUTIONS FOR INDOOR COMFORT

From the leading experts in the HVAC industry.



turn to the experts 

**0% INTEREST FOR 18 MONTHS!**



**\$99 TUNE UP & SYSTEM EVALUATION**

**DEAL EXPIRES MAY 29, 2020**

Interested in a new HVAC system? The Carrier Ductless Mini Split & the Carrier Residential Split System are two of the best solutions for energy efficient comfort. Let us come out & give your system a complete evaluation for \$99. If you feel it's time to replace your HVAC system, we offer a FREE in-home consultation to help you find the right system that fits your budget. Financing & rebates are available. As always, satisfaction is guaranteed!



**Oxford**

**PLUMBING & HEATING**

PLUMBING • HEATING • AIR CONDITIONING  
**610-932-9503 CALLOXFORD.COM**

*Come get away from it all!*

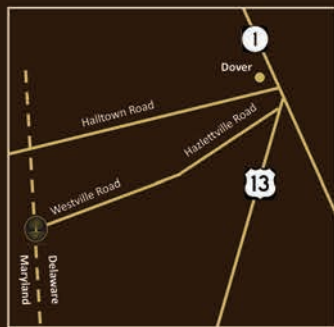


EST. 2010

**HARVEST RIDGE**  
WINERY



**Wine Tastings and Flights**  
**Wine Club**  
**Private Events**  
**Custom Labels**  
**Live Music and Events**



**1140 Newark Road, Toughkenamon, PA 19374**  
**484-915-2190**  
**447 Westville Road, Marydel, DE 19964**  
**302-343-9437**

**[www.harvestridgewinery.com](http://www.harvestridgewinery.com)**  
**[tastingroom@harvestridgewinery.com](mailto:tastingroom@harvestridgewinery.com)**



## Golf Clubs

*Continued from Page 31*

### Radley Run Country Club

**1100 Country Club Road,  
West Chester, 610-793-1660,  
[www.radleyruncountryclub.com](http://www.radleyruncountryclub.com).  
Craig Kandravi, general manager;  
John Kellogg, head pro emeritus.**

The Radley Run Country Club opened in 1965, with a golf course designed by Alfred Tull. It has formal dining in the banquet room, casual meals in The Pub, plus drinks and food in outdoor spaces. The aquatic center includes a 25-meter pool, slide and baby pool with fountain feature. Summertime games include four square, table tennis, foosball and bag-toss. The racquets facility includes four hard-surface courts, four Har-Tru lighted courts and four paddle courts. The Mansion, a 250-year-old building, has event and office space.

The 6,355-yard golf course has five tees, generating a range of play from 5,645 to 6,847 yards. "The rolling terrain coupled with two ponds and a meandering stream provides for a challenging round of golf," the club's site says.

The most photographed hole, pro shop manager Michael Van Sickle said, is No. 17: a par 4, with a dogleg on the right, bunker on the left, small pond in front of the green and waterfall nearby. The No. 1 handicap hole is the par-5 No. 7. "You have to hit a pretty good drive over a creek, and it's uphill to the green, a blind shot since you don't see the surface," he said. "It's difficult placement throughout."

Other features include a natural-grass driving range, plus pitching, chipping and putting greens.

*Continued on Page 34*





*The challenging 17th hole at the Radley Run Country Club.*

Courtesy photo



AERZEN USA  
Coatesville, PA

**WARFEL**  
CONSTRUCTION

CLIENTS FOR LIFE

warfelcc.com





# Golf Clubs

Continued from Page 32

## Wyncote Golf Club

50 Wyncote Drive, Oxford

610-932-8900; [www.wyncote.com](http://www.wyncote.com).

Jim and Sandra Pepple, co-owners;

Tim Brown, director of golf.

Wyncote Golf Club opened in 1993 with a Scottish theme on the course, in the clubhouse and the occasional themed dinner. The Ball & Thistle Pub offers a full menu and a variety of drinks daily. The Rose & Thistle Room specializes in fine dining. Club co-owners Jim and Sandra Pepple, both lifelong Chester County residents, are also developers of The Homes at Wyncote.

The par 72 Heathlands-style course, designed by Brian Ault, recalls an inland Scottish course with moguls, mounded bunkers, windy rises and wetlands. Bent grass covers the course from the tees to

the greens, and the club site lists at least one award a year, starting with *Golf Digest* calling it the third best new public course when it opened. The four tees bring the yardage from 5,454 to 7,149. As for the signature hole, "I've always used No. 14," said Jim Pepple. "All the holes are good!" (Keith Bewley, of the pro shop and golf course superintendent Mark McGreevy say it's No. 9).

"The scorecard says [the No. 1 handicap hole is] No. 13," and I agree," said Bewley. "If you don't hit it straight, you're toast. People will bring up [Nos.] 4 and 11 because of their length, but those people are wrong and just don't drive it far enough."

"Great golf, great course layout, challenging, but not over the top difficult," Dave Hynson, who plays the course once a week, writes in his five-star review on [golfnow.com](http://golfnow.com) (300 reviews average to 4.7 stars). "It's an easy walk. Conditions are generally great. Practice areas are good representations of on course conditions. Mid- and post-round pub fare is great tasting and reasonably priced."

## IRA D. BINDER ATTORNEY AT LAW

Wills, Trusts, Estates,  
Real Estate  
Business Planning

484.643.3325

Office Located in  
Oxford. Will Make  
Housecalls.

[ibinder@zoominternet.net](mailto:ibinder@zoominternet.net)

## WRITE WELL HANDWRITING CLINICS

Does your child have illegible handwriting?  
Do they have difficulty reading their own writing?



### WE PROVIDE

- ▶ Print/Cursive/Keyboarding classes for children in grades 2 through 9th grade held all year round.
- ▶ One/one classes with a Registered Occupational Therapist with 30+ years of experience.

### ALSO AVAILABLE

- Occupational Therapy for Children
- School Evaluations to determine Occupational Therapy needs
- Assistive Technology Consultations • See It Right! Color Overlay Testing
- Holistic Services: Infant Massage Instruction, Meditation and Mindful stress relief, Emotional Freedom Technique for Children

All Classes held at the Golden Light Wellness Center,  
350 Lincoln Street, Oxford, PA  
610-932-9511, [www.write-wellhandwritingclinics.com](http://www.write-wellhandwritingclinics.com)





The 12th hole of the gorgeous Wyncote Golf Club in Lower Oxford Township.

Courtesy photo

## WYNCOTE GOLF CLUB

**Ball & Thistle Pub**  
Full Service Restaurant!  
Live Music on the Weekends  
**Rose & Thistle Room**  
Accommodates  
Weddings  
Bridal/Baby Showers  
Rehearsal Dinners  
Anniversaries & Birthdays  
All Special Occasions

**MELANIE IRRGANG**  
Food & Beverage Manager

Phone: 610-932-8900 EXT.4  
Fax: 610-932-8197

Email: [events@wyncote.com](mailto:events@wyncote.com)

50 Wyncote Drive, Oxford, PA 19363



Engineering | Surveying | Environmental Services



### Our work touches everyday life.

From the water we drink to the air we breathe to the buildings and communities where we live work and play.

- Municipal Engineering and Planning
- Site Engineering and Infrastructure
- Water and Wastewater Engineering
- Indoor Environmental Quality
- Surveying and Data Capture
- Facilities Engineering
- Civil Engineering

**Spotts, Stevens and McCoy**

READING | LEHIGH VALLEY | LANCASTER | WEST CHESTER  
[ssmgroup.com](http://ssmgroup.com)

# Highlighting a few in southern Ch

By Steven Hoffman  
Contributing Writer

Chester County is a great place to live and work, and there are a lot of businesses and organizations that help maintain the quality of life for others. Municipal leaders and the top executives at the dozens of nonprofit organizations help shape

the community around them, and a number of those entities—including La Comunidad Hispana, the Kennett Area YMCA, Kennett Township, and Kennett Area Community Service—recently welcomed new leaders.



Courtesy photo

*Mariana Izraelson joined the team as the CEO of La Comunidad Hispana in December. The organization has been changing lives in Chester County for more than four decades.*

**La Comunidad Hispana** has been changing lives in southern Chester County for more than four decades. The doctors, nurse practitioners, chronic care specialists, nurses, behavioral health consultants, case workers, medical assistants, nutritionists, and interpreters work as a team to provide integrated, person-centered care for low-income residents of all ages.

Mariana Izraelson, PsyD, LCADC, PMP joined the team as the CEO of La Comunidad Hispana in December. Izraelson has ten years of administrative and clinical experience overseeing federally funded and fee-for-service healthcare projects and services.

Her dedication to providing high-quality public health prevention and intervention services to underserved and under-represented communities fits perfectly with the mission of the organization.

From increased access to primary and pediatric care to the recently expanded dental center and women's health center, the number of patients that La Comunidad Hispana serves has doubled over the last five years.

Izraelson, who is originally from Argentina, completed her undergraduate education in the U.S. She is fluent in Spanish and English. She holds a doctorate in psychology and clinical psychology. Her professional experience includes serving as the director, state care coordinator for Healthcare Access Maryland, serving as the director of outpatient services at Ashley Addiction Treatment, and working as the executive director of Shepherd's Clinic, where she rebuilt the fundraising development function of the organization and also recruited new board members.



# of the new leaders Chester County

**Kennett Area Community Service (KACS)** connects people with food, shelter, and, most importantly, a path forward, according to Leah M. Reynolds, the executive director of the organization.

That assistance takes many forms, and KACS is continually evolving to meet the needs of local residents in southern Chester County. Fighting hunger has been at the heart of the organization's mission ever since Bill Buffington delivered his first food basket in 1954. Today, the food cupboard provides families with household incomes at or below the Federal Poverty Level the opportunity to shop for food at the KACS food cupboard. Reynolds said that 550 families are sustained by the food cupboard each month, which represents 900 children.

"Food insecurity is real here in southern Chester County" Reynolds explained.

Part of the mission of KACS is to bring awareness to the issues of poverty like food insecurity, homelessness, and the need for affordable housing. Reynolds, who was hired as the executive director of KACS in July of 2019, said that they are working to get the message out about all the services that KACS provides—and about the great need that exists in the community.

The Emergency Assistance Program offers financial assistance for rent, utility bills, and other basic living expenses. Housing assistance is offered to those who are experiencing homelessness. The KACS staff can also connect those in need with a partner agency that will best assist them. There's even a micro-loan program that can be offered to individuals that need a short-term solution for auto repairs, rent assistance, and other essential needs.

The Bridges Out of Poverty community support program at KACS provides a group of concepts, workshops, and products to help employers, community organizations, social service agencies, and individuals address and reduce poverty in a comprehensive way. This collaborative effort helps to build a more prosperous and sustainable community.

Another KACS initiative that has proven to be effective is the Getting Ahead class, a 16-session curriculum that helps individuals in poverty build their resources. Reynolds said that now close to 100 people have already completed the Getting Ahead



Courtesy photo

*Leah M. Reynolds, the new executive director for Kennett Area Community Service (KACS).*

Class, which is offered in both English and Spanish. For those people who have already completed the Getting Ahead curriculum, there is even a companion Staying Ahead program that helps people maintain their self-sufficiency.

Reynolds said that they also hope to launch a Financial Literacy program for low-income adults and families in both English and Spanish.

Reynolds came to KACS with over 25 years of successful experience leading both small and complex nonprofit organizations that focused on initiatives that led to transformative change. Assisting people has not just been her professional work, but a personal pursuit as well. This is very much in line with KACS' mission to strengthen the community through food, housing and crisis intervention services.

*Continued on Page 38*

## New Leaders

Continued from Page 37

The Kennett Area YMCA has long been a catalyst for improving the quality of life and well-being for all in our community through youth development programs, healthy living classes and social responsibility.

The Kennett Area YMCA recently welcomed Tom Gallagher as its new executive director. Gallagher returns to the Kennett Area YMCA after a five-year hiatus from the association as he worked at the Spring Valley YMCA, first as associate executive director in 2015, then as executive director beginning in 2018. Gallagher began his YMCA career in 2004 as the health and wellness director at the Kennett Area YMCA, where he remained until he transferred to the Brandywine YMCA in December 2012 as the senior program director.

Gallagher joined the YMCA after graduating from Temple University with a bachelor's degree in exercise physiology and working in corporate wellness, citing that he was looking for a career where he could make a difference in the community. He carries that passion to help others to this day.

"I am excited to return to the Kennett Area YMCA, a community that I've always loved," said Gallagher. "It is surreal that I am able to serve this community again, as I was previously honored to serve for eight and a half years. I remember us all working together to get sidewalks on Cypress Street and mile markers in Anson B. Nixon Park. Kennett is a great community that has a big heart to serve others and likes to have fun."



Courtesy photo

**Tom Gallagher is the executive director of the Kennett Area YMCA.**

The advertisement features a background image of a rustic bar with wooden walls and a dark countertop. In the foreground, three wine bottles are displayed: a black bottle, a red bottle, and a white bottle, all with colorful labels. The text is overlaid on the image.

**PARADOX<sup>®</sup>**  
**VINEYARD**  
uncork . relax . unwind

## Meet, Dine & Wine

We've got you covered.  
Business meetings, \*Team building workshops,  
Client and Employee Appreciation Breakfast, Lunch & Dinner Meetings

*Every meeting is better with Paradox*

**Paradox Vineyard, Landenberg** 1833 Flint Hill Rd, Landenberg, PA





Courtesy photo  
**Eden Ratliff became the township manager of Kennett Township in September of 2019.**

**Eden Ratliff** is the newly appointed Township Manager of Kennett Township. As an Eagle Scout and accomplished public servant, he has dedicated his professional career to improving municipal governments to efficiently deliver public services while meeting the needs and strategic vision of a community. He looks fondly on his experiences negotiating settlements on state fines and a federal grant default in order to mitigate exposure for small town budgets. The opportunity to rebuild police departments focused on proactive engagement and community policing are just some of the examples of how Eden has met community needs through innovative management. He is passionate about public utilities as public goods including water, wastewater, and stormwater. In September 2019 Eden testified in front of the Senate Environmental Resources and Energy Committee to advocate for Commonwealth citizens who face increasing costs relative to stormwater management. He is a Chester County native and holds a bachelors in Political Science, a masters in Employment and Labor Relations, and is wrapping up a masters in Public Management from Johns Hopkins University. Shortly after being hired as the township manager in Kennett Township, Ratliff told the *Chester County Press*, "Municipal management is personal to me, and I will work hard to bring my experiences, my education and my unwavering desire to serve Kennett Township. I'm anxious to learn about your priorities, areas you want me to focus and the concerns that you have. Together, we can generate positive outcomes for the community. Together, we can make great things happen in Kennett Township."



**WHISMAN GIORDANO**  
 CERTIFIED PUBLIC ACCOUNTANTS

WhismanGiordano.com  
 302.266.0202  
 info@whismangiordano.com

111 Continental Drive, Suite 210  
 Newark, DE 19713

---

MARVIN S. GILMAN  
**SUPERSTARS IN BUSINESS**  
 2017 & 2019 Award of Excellence Winners





*Annalie Korengel is named the Outstanding Citizen by the Southern Chester County Chamber of Commerce.*

# Chamber honors Korengel at 53rd Annual Chairman's gala

Reporting and photography by Chris Barber

Annalie Korengel was honored as the 2019 Outstanding Citizen Award recipient at the 53rd annual Southern Chester County Chamber of Commerce Chairman's Gala.

The gala, held on Feb. 22 at Longwood Gardens, honors a local resident who, in the opinion of the selection committee, unselfishly contributes to the community's quality of life. The tradition began in 1968.

Korengel, 51, is the pastor of the Unionville Presbyterian Church, which is known widely as "The Small Church with the Big Heart." Korengel is credited with being a driving force for the church and for providing emotional support to local police departments as well as families who have lost loved ones to accidents or overdoses. She serves as the chaplain for several local police departments. She is also a former Kennett Rotary Club president, a participant in grief-response organizations, and an early supporter of Family Promise of Southern Chester County, a non-profit that works to alleviate homelessness in the area.

The gala attracted about 300 attendees and featured a buffet dinner, dancing, and entertainment.



*Annalie Korengel, right, is joined by her mother Bonnie Korengel and her Uncle Dick Walker, who came in from Illinois for the ceremony.*



*Jim McLeod, the Outstanding Citizen Award recipient for 2017, with Chris Dolinger.*



*Dave Haradon, the 2015 recipient of the Outstanding Citizen Award, is joined by his wife, Peggy, and Michael Brookshire.*



*Jim Turner, the chamber's board chairman for 2020, encouraged attendees to "seize the day."*



*Erik Gudmundson, 2019 Chairman, and event Host, explained how the Southern Chester County Chamber is thriving.*





James E. Turner, Chairman of the Board (Chester Water Authority), enjoys a photo with SCCC Chairman of the Board (Chester Water Authority), is joined by his wife, Deborah



Annalie Korengel, Outstanding Citizen of the Year, is joined by Michele Berardi, Diamond Scholarship Sponsor (Kendal-Crosslands Communities) and guests. Ms. Berardi nominated Annalie Korengel for the prestigious award.



Randy and Amy Lieberman



Jonathan Jordan, SCCC Board member, Riley Riper Hollin & Colagreco Attorneys at Law – Presenting Sponsor, welcomes guests to the 53rd Annual Chairman's Gala



Presenting Sponsor table, Riley Riper Hollin & Colagreco Attorneys at Law, enjoy the program and dinner



Traci and Ron Bauguess and Bonnie Musser



Susann Guy, Paula Paisley, SCCC Treasurer and Board member, and Peppermint



Marian Markowitz, Chester County Commissioner, is joined by Betsy Niedziejko, SCCC Chairman Elect, WSFS Bank – Reception Sponsor, and Claire Mooney, SCCC Board member, Jennersville Hospital-Tower Health

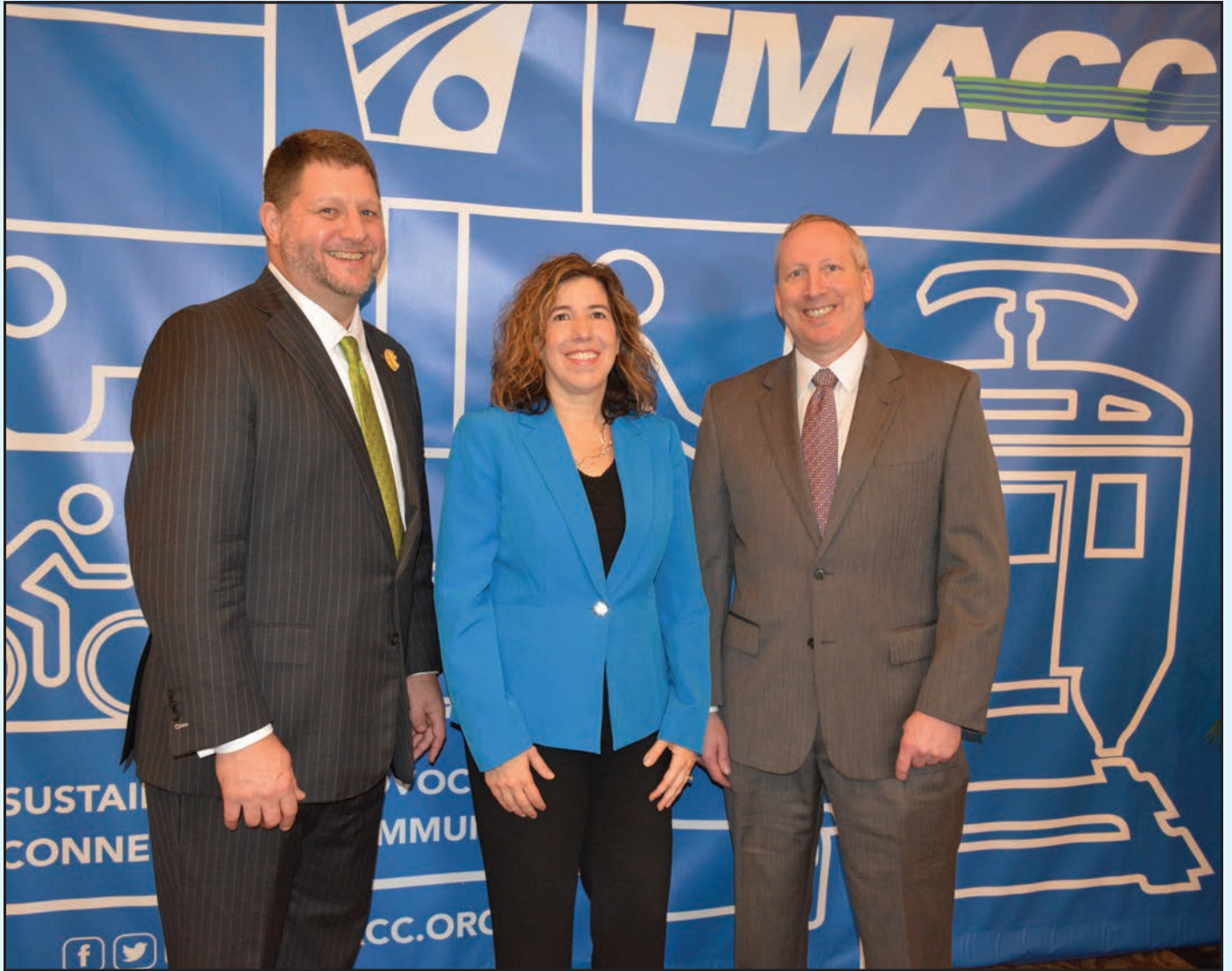


Guests seated in the Main Conservatory of Longwood Gardens enjoy the program at the 53rd Annual Chairman's Gala



Meet Our Member:

# The Transportation Management Association of Chester County



Courtesy photo

*Timothy Phelps, the executive director of the Transportation Management Association of Chester County, with Leslie Richards, the former PA Secretary of Transportation and current SEPTA General Manager, and Don Jacobs, Traffic Planning and Design and a past TMACC Chair.*





Courtesy photo

Part of the mission of the Transportation Management Association of Chester County is to bring various groups together for a common purpose. Pictured are Betsy Mastaglio of DVRPC, Robert Dredge, Chair of Bike CHESTER County, Timothy Phelps, the executive director of TMACC, Randy Waltermeyer, Traffic Planning and Design, and Karen Whitaker, TMACC board secretary.

**By Steven Hoffman  
Contributing Writer**

Transportation is always a very important issue, especially for a vibrant and growing region like Chester County. For nearly two decades, the Transportation Management Association of Chester County (TMACC) has been working on transportation issues by facilitating cooperation between the public and private sectors to identify, evaluate, and analyze significant transportation issues. The goal is to identify and implement transportation solutions that ensure the quality of life for people who live and work in Chester County.

TMACC advocates for sustainable transportation practices and connectivity for the entire Chester County region, representing over 20,000 commuters in Greater Philadelphia.

For residents in southern Chester County, perhaps the most visible sign of TMACC's work is the SCCOOT bus route, which is the public transportation available to people who live or work in the area.

"We operate the SCCOOT bus route, the service that travels from Oxford to West Chester each Monday through Friday," explained Timothy Phelps, the executive director of TMACC.

The SCCOOT bus route is designed to connect people to shopping, entertainment, medical appointments, and more—and it only costs a few dollars. Taking the SCCOOT bus from Oxford all the way to West Chester, for instance, costs just \$4.

"It is very cost-effective for people," Phelps said.

Residents can also utilize the SCCOOT bus service to connect to SEPTA routes, providing a valuable transportation link to the greater Philadelphia region.

*Continued on Page 44*

We create  
places where  
**communities**  
thrive



Design with community in mind  
[stantec.com/pennsylvania-offices](http://stantec.com/pennsylvania-offices)



## TMACC

*Continued from Page 43*

TMACC, which also manages the Coatesville Link that operates from Coatesville to Parkesburg, has been advocating for increased access to public transportation since it was started in 1992. The organization was initially called the Chester Valley TMA, but in June of 1995, the Chester Valley TMA Board of Directors changed the name to the Transportation Management Association of Chester County.

Phelps explained that TMACC is an advocate for transportation options that are safe and sustainable, whether it's by car, bus, train, cab, rideshare, or even by foot. Transportation is important in any community, especially one as dynamic as Chester County.

Phelps joined TMACC as its executive director in 2012. Before that, he had more than ten years of experience with the Greater West Chester Chamber of Commerce, the Main Line Chamber of Commerce, and the Tri-County Chamber of Commerce, where he focused on the advocacy for business and transportation issues and membership development.

According to Phelps, one of the roles that TMACC plays is as a librarian of transportation information, sharing resources about transportation projects in Chester County. The safe, multimodal movement of people includes pedestrians, cyclists, motorized vehicles, and public transportation.

"We advocate for safe and efficient transportation infrastructure, as well as access to and frequency of public transportation," Phelps said.

TMACC recently received small grants from AARP and America Walks. The AARP grant will allow for bilingual, large-print schedules to be posted at bus stops, while the America Walks grant will allow for several portable bus stops to be set up to illustrate what a more permanent bus stop might look like—the ultimate goal being to increase the number of bus stops so that more people will be encouraged to utilize public transportation regularly.

**To learn more about commuting options, transportation projects, or SCCOOT bus schedules, visit TMACC at [www.tmac.org](http://www.tmac.org).**



## Meet Our Member:

# Camp Saginaw has been making memories for campers that last a lifetime

By Marcella Peyre-Ferry  
Contributing Writer

Since 1927, Camp Saginaw has been making memories for campers that last a lifetime. Campers enjoy some of the same activities as generations did before them - fishing, canoeing and kayaking. There are also a full range of activities for the 21st century, including laser tag, wake boarding and, a new addition this year, paddle boats.

Campers today, more than ever, benefit from the chance to be free of the stress of the everyday world and develop interpersonal skills. Camp Saginaw is a tech-free camp. Music playing devices are allowed, but no iPhones or video games.

"It's all about having a balance," explained Mike Petkov, the owner and director of Camp Saginaw. "Being able to send your child to a camp, whether it's for two weeks or for seven weeks, taking that break and giving children an opportunity to be out with nature and making friends without staring down at a screen, is invaluable. A lot of parents see that, understand that, and value that."

Some of today's campers are third- and fourth-generation campers. "We do a reunion every three years," Petkov explained. "There are people who come back who are in their 70s and 80s, we call them super seniors. They tell these stories about when they were at camp. What's interesting is the names change and the stories are slightly different, but the concepts are very similar in terms of the love of camp."



Courtesy photo

*Camp Saginaw is owned and operated by the Petkov family.*

Many campers spend ten months anticipating the two months of camp to return to their favorite place and to be surrounded by their best friends.

"Camp friends stay friends not just during their youth but for the rest of their lives," Petkov said.

Saginaw Day Camp (SDC) is available for boys and girls ages 4 to 14, who may move on to become Counselors in Training at ages 15 to 17. Camp Saginaw's Overnight Camp serves young people ages 6 to 16, who may come back as Junior Counselors at age 17 or return as staff members at age 18 and above.

"Our primary source for staff are prior campers. People who grew up going to camp as children love to return and give back," Petkov said. "They want the opportunity to provide an incredible summer to children currently at camp. They talk about the wonderful summers they had and they want to keep that going."

The Retreat Center is available in the off-season for a variety of events, including local, national, and international companies.

"All of these companies come in for a day or a weekend, they can have exciting team-building events that are as active or as passive as they want," Petkov said.

*Continued on Page 46*

# Camp Saginaw

Continued from Page 45

The Retreat Center is also used for Chester County Camp Cadet, events for children with medical issues, a local fishermen's group, local school groups and more. The site is also available for large parties, reunions, and weddings.

Camp Saginaw has always been a family business. Petkov's parents, Jay and Georgia, bought the property in 1986. Petkov was just nine years old at the time. He and his sister came to the camp with their parents for the first time in 1986.

"I went every summer, all the way through as a camper and then my first working summer was as a maintenance boy. Since then I've done every job imaginable," Petkov said.

After college, Petkov went into the business world for a time, but eventually he came back to the camp. "I said, 'I'm thinking about coming back to camp.' My dad was like, 'when can you start?' It was becoming a lot for him," Petkov said.

Still family-owned and operated, Petkov is now the owner/director and has been joined by his wife, Jessica. Their son and daughter ages 11 and 14 are now enjoying the camping

experience at Camp Saginaw, just as their father did.

Camp Saginaw is a place where you are immersed in nature, without being too far from home. Located off a quiet road with no outside traffic, the site is not only quiet, but secure.

"Parents like sending their children away, knowing that they're not too far away," Petkov said.

Camp Saginaw continues to upgrade activities and equipment as well as facilities, keeping an eye toward maintaining the high-quality camp for the future. "We are putting a lot of time, maintenance and money back into the camp so it's going to be vibrant and successful for years to come," Petkov said. In the summer, 200 staff members and 400 campers add to the local economy.

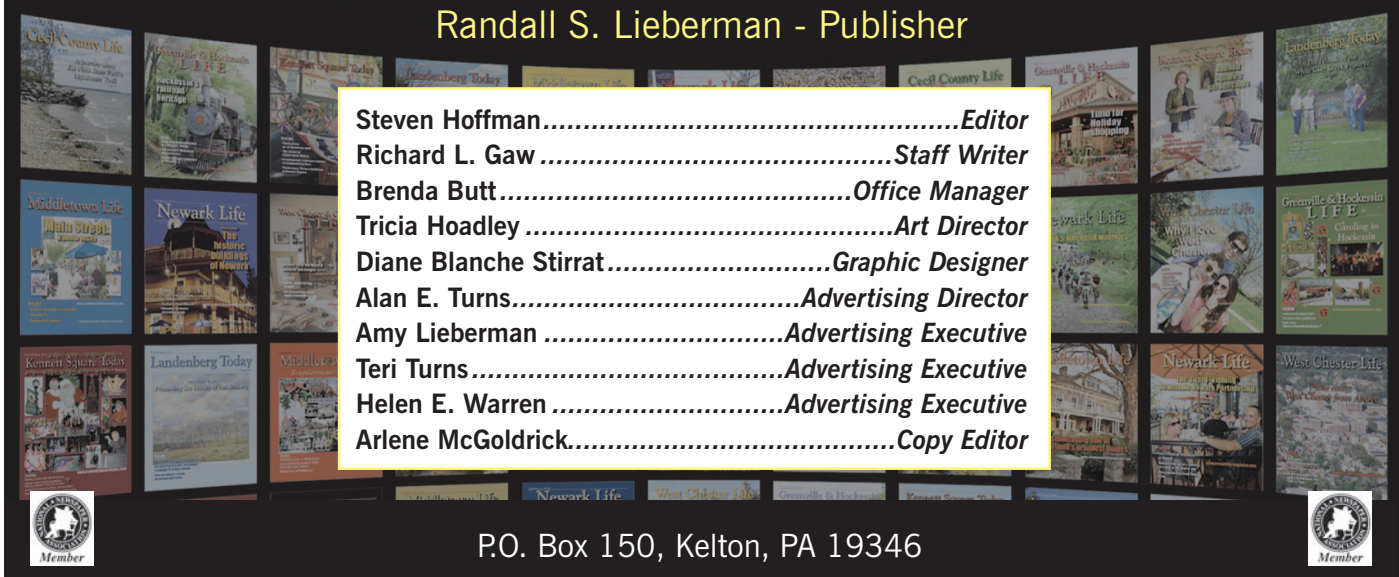
"We're setting ourselves up for the future. We're just proud to be a part of the community. We get tremendous support from our neighbors," Petkov said.

To find out more visit the website at [www.campsaginaw.com](http://www.campsaginaw.com).

## Published by the Chester County Press in cooperation with the Southern Chester County Chamber of Commerce

Randall S. Lieberman - Publisher

- Steven Hoffman.....*Editor*
- Richard L. Gaw .....*Staff Writer*
- Brenda Butt.....*Office Manager*
- Tricia Hoadley.....*Art Director*
- Diane Blanche Stirrat.....*Graphic Designer*
- Alan E. Turns.....*Advertising Director*
- Amy Lieberman.....*Advertising Executive*
- Teri Turns.....*Advertising Executive*
- Helen E. Warren.....*Advertising Executive*
- Arlene McGoldrick.....*Copy Editor*



P.O. Box 150, Kelton, PA 19346





# Advertiser's Index



Alchemy Insurance .....	17
Breuninger Insurance.....	19
Chadds Ford Climate Control.....	3
Chester County Hospital - Penn.....	61
Chester County Technical College High School- Pennock's Bridge .....	7
Creative Financial Group.....	15
First Choice Mortgage Advisors, LLC .....	26
Friends Home In Kennett.....	5
Golden Light Wellness Center .....	34
Harvest Ridge Winery.....	32
Ira D Binder, Esquire .....	34
Kennett Area YMCA.....	16
KVIS & COE Insurance .....	11
Longwood Gardens.....	2
Longwood Rotary.....	30
Martin Classic Furniture .....	64
McGrory Inc .....	23
Mitchell Mechanical, LLC .....	20
Nawn and Company, CPA's.....	29
Oxford Plumbing & Heating.....	31
Paisley Solutions .....	14
Paradocx.....	38
Pegasus Technologies.....	17
Pike Creek Mortgage Services.....	24
Premier Orthopaedics.....	62
R&D Heating & Cooling, Inc. ....	25
Spotts, Stevens and McCoy.....	35
Stantec .....	44
Michael Moyer, State Farm Agent .....	29
Chescobus.....	63
The Tri-M Group, LLC .....	4
Warfel Construction .....	33
Whisman Giordano & Associates, LLC.....	39
Wyncote Golf Club.....	35



# Southern Chester County Chamber of Commerce Membership Index

<b>A Hand For All Seasons, LLC</b> ..... 484-467-4836 <i>Home Services - Maintenance</i>	<b>BB&amp;T Bank - New Garden East</b> ..... 610-708-3038 <i>Financial Institution - Bank</i>	<b>Buckley, Brion, McGuire &amp; Morris LLP</b> ..... 610-436-4400 <i>Legal - Law Firm</i>
<b>Ad Pro, Inc. - Chester County Press</b> . 610-869-5553 <i>Media - Newspapers/Publications</i>	<b>BB&amp;T Bank - Oxford</b> ..... 484-881-4851 <i>Financial Institution - Bank</i>	<b>Bumpers &amp; Company, Certified Public Accountants</b> ..... 302-798-3300 <i>Accountant - CPA</i>
<b>Affinity Energy Management</b> ..... 302-218-8920 <i>Energy - Energy Consulting</i>	<b>BB&amp;T Bank - Oxford South</b> ..... 610-932-5440 <i>Financial Institution - Bank</i>	<b>Burton's Barber Shop, Established 1892</b> ..... 610-444-9964 <i>Personal Services - Barber</i>
<b>AGS International Forwarders Inc.</b> ..... 610-255-5400 <i>Transportation</i>	<b>BB&amp;T Bank - Oxford Third</b> ..... 610-932-9295 <i>Financial Institution - Bank</i>	<b>ButlerBank Consulting</b> ..... 610-268-1276 <i>Business Services - Consulting Services</i>
<b>AI George - RE/MAX Town &amp; Country</b> ..... 610-202-2942 <i>Real Estate - Residential Real Estate</i>	<b>BB&amp;T Bank - West Grove</b> ..... 610-806-5011 <i>Financial Institution - Bank</i>	<b>Byrsa Bistro</b> ..... 610-444-5050 <i>Restaurants and Food Service - Bar and Food</i>
<b>Albert J. Schmitt DMD, PC</b> ..... 610-444-6300 <i>Medical/Health Care Service - Dentists</i>	<b>Beacon Technologies, Inc.</b> ..... 610-444-9008 <i>Business Services - Full Service Internet, IT, Systems, Network, Web and Voice</i>	<b>C.P. Yeatman &amp; Sons, Inc./Mother Earth Organic Mushrooms</b> ..... 610-869-3595 <i>Mushrooms - Mushroom Farms/Companies</i>
<b>Alchemy Insurance</b> ..... 484-999-2101 <i>Insurance - Home and Auto</i>	<b>Beardsley Agency/Farmers</b> ..... 484-200-7511 <i>Insurance - Home and Auto</i>	<b>Cabot-Kjellerup Realty Trust</b> ..... 610-869-2800 <i>Real Estate</i>
<b>Allen Insurance Group</b> ..... 1-800-486-1244 <i>Insurance - Group and Individual Medical, Dental, Life and Disability</i>	<b>Becker Locksmith Services, Inc.</b> ..... 610-444-1323 <i>Locksmith</i>	<b>Camp Bow Wow Avondale Pa</b> ..... 610-268-DOGS <i>Animal Services - Full Service</i>
<b>Allstate Insurance Company - The Roselli Agency</b> ..... 610-444-0300 <i>Insurance</i>	<b>Beiler-Campbell Realtors</b> ..... 610-932-1000 <i>Real Estate - Residential/ Commercial Real Estate Sales</i>	<b>Camp Saginaw</b> ..... 888-477-CAMP <i>Lodging - Campgrounds</i>
<b>Alps Plumbing Services</b> ..... 610-368-6388 <i>Plumbing - Plumbing Contractors</i>	<b>Belfint, Lyons &amp; Shuman Certified Public Accountants</b> ..... 302-225-0600 <i>Accountant - CPA</i>	<b>Canine Partners for Life</b> ..... 610-869-4902 <i>Non-Profit</i>
<b>American Mushroom Institute</b> ..... 610-268-7483 <i>Mushrooms - Mushroom Farms/Companies</i>	<b>Belles Lacrosse LLC</b> ..... 484-459-3591 <i>Athletics - Lacrosse</i>	<b>Carosella &amp; Associates, P.C.</b> ..... 610-431-3300 <i>Legal - Law Firm</i>
<b>Andris Law</b> ..... 610-585-1256 <i>Legal - Attorney</i>	<b>BERNARDON</b> ..... 610-444-2900 <i>Architect</i>	<b>CASA Youth Advocates, Inc.</b> ..... 610-565-2208 <i>Non-Profit</i>
<b>Anthony Zunino, Inc.</b> ..... 610-268-0201 <i>Heating and Air Conditioning</i>	<b>Better Business Bureau/Metro Philadelphia/Eastern PA Main Office</b> ..... 215-985-9313 <i>Non-Profit</i>	<b>CertaPro Painters of Western Chester County</b> ..... 484-283-5003 <i>Painter - Painting Commercial/ Residential</i>
<b>Anvil Land Transfer Company</b> ..... 610-444-6800 <i>Real Estate - Title Company</i>	<b>Boothwyn Pharmacy</b> ..... 800-476-7496 <i>Medical/Health Care Service - Pharmacies</i>	<b>CF Fresh, LLC (dba Country Fresh Mushrooms)</b> ..... 610-268-3033 <i>Wholesale Distributor - Mushrooms</i>
<b>Aqua America</b> ..... 610-645-1019 <i>Water - Water Supply</i>	<b>Borough of Avondale</b> ..... 610-268-8501 <i>Municipality</i>	<b>Chadds Ford Animal Hospital</b> ..... 610-388-2141 <i>Veterinarian</i>
<b>ARRO Consulting, Inc.</b> ..... 484-999-6150 <i>Engineering - Civil and Environmental</i>	<b>Borough of Kennett Square</b> ..... 610-444-6020 <i>Municipality</i>	<b>Chadds Ford Climate Control, Inc.</b> ..... 610-388-9333 <i>Heating and Air Conditioning</i>
<b>AT&amp;T</b> ..... 720-308-3071 <i>Energy</i>	<b>Borough of Oxford</b> ..... 610-932-2500 <i>Government</i>	<b>Chadds Ford Complete Services, LLC</b> ..... 484-770-8261 <i>Heating, Air Conditioning, Plumbing &amp; Electric</i>
<b>Atlantic Pension Services, Inc.</b> ..... 610-925-5554 <i>Business Services</i>	<b>Borough of West Grove</b> ..... 610-869-2792 <i>Municipality</i>	<b>Chadds Ford Live</b> ..... 610-212-3639 <i>Media - Newspapers/Publications</i>
<b>Avon Grove Charter School</b> ..... 484-667-5000 <i>School - Charter School</i>	<b>Braeloch Brewing</b> ..... 610- 612-9242 <i>Brewery</i>	<b>Chadds Ford Travel</b> ..... 610-268-8680 <i>Travel</i>
<b>Avon Grove School District</b> ..... 610-869-2441 <i>School - High School</i>	<b>Brand It Signs &amp; Graphics, LLC</b> ..... 610-444-2020 <i>Business Services - Signs &amp; Signage</i>	<b>Chaddsford Winery, LTD</b> ..... 610-388-6221 <i>Wine - Wine Tasting</i>
<b>B-103 Corporation</b> ..... 610-388-2800 <i>Accountant - CPA</i>	<b>Brandywine Concierge Senior Services</b> ..... 717-606-7281 <i>Senior Services</i>	<b>Chesco Security, Inc.</b> ..... 610-268-3923 <i>Home Services - Security</i>
<b>Baccellieri Family Dentistry LLP</b> ..... 610-444-0208 <i>Medical/Health Care Service - Dentists</i>	<b>Brandywine Red Clay Alliance</b> ..... 610-793-1090 <i>Non-Profit</i>	<b>Chester County Agricultural Development Council</b> ..... 610-344-6285 <i>Government</i>
<b>Baker Tilly Virchow Krause, LLP</b> ..... 302-442-4607 <i>Accountant - CPA</i>	<b>Brandywine Septic Services, Inc.</b> ..... 610-869-0443 <i>Sewage - Septic Systems</i>	<b>Chester County Community Foundation</b> ..... 610-696-8211 <i>Non-Profit</i>
<b>Balmoral Medical Case Management, LLC</b> ..... 215-480-1451 <i>Medical/Health Care Service - Nursing Care</i>	<b>Bright Orange Thread</b> ..... 302-250-2339 <i>Marketing - Consultant</i>	<b>Chester County Conference &amp; Visitors Bureau</b> ..... 484-840-7208 <i>Recreation/Entertainment - Tourism</i>
<b>Barsz Gowie Amon &amp; Fultz, LLC</b> ..... 610-388-7800 <i>Accountant - CPA</i>	<b>Brownfield Science &amp; Technology, Inc.</b> ..... 610-593-5500 <i>Environmental</i>	<b>Chester County Economic Development Council</b> ..... 610-458-5700 <i>Non-Profit</i>
<b>BB&amp;T Bank - Avon Grove</b> ..... 610-563-2696 <i>Financial Institution - Bank</i>	<b>BSS Contractors, LLC</b> ..... 610-345-1316 <i>Contractor</i>	
<b>BB&amp;T Bank - Kennett Square</b> ..... 610-444-8526 <i>Financial Institution - Bank</i>	<b>BTR-Security</b> ..... 610-444-5295 <i>Business Services - Data Security Compliance Advisors</i>	
<b>BB&amp;T Bank - Longwood</b> ..... 610-444-8350 <i>Financial Institution - Bank</i>		



<b>Chester County Food Bank</b> ..... 610-873-6000 <i>Non-Profit</i>	<b>Delaware County Community College</b> ..... 484-237-6406 <i>School - Colleges and Universities</i>	<b>Foundation for Free Enterprise Education</b> ..... 814-833-9576 <i>Education</i>
<b>Chester County Hospital</b> ..... 610-732-6930 <i>Medical/Heath Care Service - Hospitals</i>	<b>Design By Daphne, LLC</b> ..... 302-354-4158 <i>Home Improvement</i>	<b>Franklin Mint Federal Credit Union - Kennett Square</b> ..... 610-335-1915 <i>Financial Institution - Credit Union</i>
<b>Chester County Technical College High School Pennock's Bridge Campus</b> ..... 610-345-1800 <i>School - High School</i>	<b>DesignDesign Inc.</b> ..... 610-444-8868 <i>Graphic Design - Branding</i>	<b>Franklin Township</b> ..... 610-255-5212 <i>Municipality</i>
<b>Chester County Women's Journal</b> ..... 302-236-1435 <i>Media - Magazines</i>	<b>DG Design</b> ..... 610-869-8561 <i>Internet Service - Web Design</i>	<b>Friends Home in Kennett</b> ..... 610-444-2577 <i>Retirement Community - Independent living, supportive independent living</i>
<b>Chester Water Authority</b> ..... 610-876-8185 <i>Water - Water Supply</i>	<b>Diamond State Financial Group</b> ..... 302-366-0366 <i>Financial Services</i>	<b>Fulton Bank Brandywine Division</b> ..... 610-918-8814 <i>Financial Institution - Bank</i>
<b>Chiropractic Services, PA</b> ..... 610-932-9061 <i>Medical/Heath Care Service - Chiropractors</i>	<b>DiMatteo Financial Group, Inc.</b> ..... 610-388-7125 <i>Financial Services</i>	<b>Garcia-Taylor Insurance Agency Inc.</b> 610-932-4935 <i>Insurance - Home and Auto</i>
<b>Christine Gordon - Merrill Lynch</b> ..... 610-594-1177 <i>Financial Services - Wealth Management</i>	<b>DNB First</b> ..... 610-444-4350 <i>Financial Institution - Bank</i>	<b>Garden Square Landscaping, Inc.</b> ..... 610-444-0207 <i>Landscaping - Landscape Design</i>
<b>Citadel Federal Credit Union</b> ..... 610-380-7011 <i>Financial Institution - Credit Union</i>	<b>Door &amp; Gate Co. LLC</b> ..... 302-295-3669 <i>Home Improvement - Garage Doors</i>	<b>Genesis</b> ..... 610-444-6350 <i>Medical/Heath Care Service - Nursing Homes/ Rehab Facilities</i>
<b>Clarion Law, LLC</b> ..... 484-948-1436 <i>Legal - Law Firm</i>	<b>Dorset Connects</b> ..... 484-845-1600 <i>Computer Services</i>	<b>Gilmore &amp; Associates, Inc.</b> ..... 610-444-9006 <i>Engineering</i>
<b>Clemens, Inc.</b> ..... 610-444-4404 <i>Building Contractor</i>	<b>East Marlborough Township</b> ..... 610-444-0725 <i>Municipality</i>	<b>Glen Willow Orchards</b> ..... 610-268-8743 <i>Farms/Farmers - Orchard</i>
<b>Coatesville Savings Bank</b> ..... 610-932-7756 <i>Financial Institution - Bank</i>	<b>Ed Rahme Architect</b> ..... 610-453-7874 <i>Architect</i>	<b>Godder Printing &amp; Graphic Design</b> ..... 610-869-4475 <i>Printing</i>
<b>Coatesville VA Medical Center</b> ..... 610-384-7711 <i>Medical/Heath Care Service - Hospitals</i>	<b>Edward Jones Investments</b> ..... 610-444-5220 <i>Financial Services - Financial Planning</i>	<b>Good Neighbors Home Repair</b> ..... 610-444-1860 <i>Non-Profit</i>
<b>Cohen Seglias Pallas Greenhall &amp; Furman PC</b> ..... 610-869-3600 <i>Legal - Law Firm</i>	<b>Eichman Law, PLLC</b> ..... 484-734-0378 <i>Legal - Law Firm</i>	<b>Goodwin's Refrigeration LLC</b> ..... 610-255-5100 <i>Heating and Air Conditioning - Refrigeration</i>
<b>Colonial Life - West Chester</b> ..... 484-356-7644 <i>Insurance - Group and Individual Medical, Dental, Life and Disability</i>	<b>Einstein Property Management, LLC</b> 484-643-2024 <i>Real Estate - Property Management</i>	<b>Gordmans</b> ..... (610) 925-0622 <i>Retail Store - Apparel, Accessories, Cosmetics, Footwear, Home goods</i>
<b>compuSIGN.com</b> ..... 610-268-2290 <i>Business Services - Signs &amp; Signage</i>	<b>Elk Township</b> ..... 610-255-0634 <i>Municipality</i>	<b>Governor's Southeast Regional Office</b> ..... 215-560-2640 <i>Government</i>
<b>Concord Home Mortgage</b> ..... 610-306-7929 <i>Mortgage - Residential Mortgage</i>	<b>Emerald Green Lawns</b> ..... 302-836-6909 <i>Landscaping - Lawn Care</i>	<b>Green Solution Building Services, LLC</b> ..... 610-345-5468 <i>Cleaning - Commercial Cleaning</i>
<b>ConnectYourCare</b> ..... 610-869-3289 <i>Insurance</i>	<b>Ethel Ann Murphy - BHHS Fox &amp; Roach Realtors</b> ..... 610-368-9929 <i>Real Estate - Residential Real Estate</i>	<b>Greenmore Farm Animal Rescue, Inc.</b> ..... 267-228-5035 <i>Non-Profit</i>
<b>Connoisseur Travel, Ltd.</b> ..... 610-925-4690 <i>Travel</i>	<b>Exelon Generation</b> ..... 610-765-7061 <i>Energy</i>	<b>Habitat For Humanity of Chester County</b> ..... 610-384-7993 <i>Non-Profit</i>
<b>Core Family Practice</b> ..... 610-612-9283 <i>Medical/Heath Care Service - Physicians</i>	<b>F. Frederick Breuninger &amp; Son Insurance, Inc.</b> ..... 610-384-1980 <i>Insurance</i>	<b>Hampton Inn &amp; Suites Chadds Ford</b> .. 610-358-9540 <i>Lodging - Hotels/Motels</i>
<b>Corrective Chiropractic</b> ..... 302-234-1115 <i>Medical/Heath Care Service - Chiropractors</i>	<b>Fairfield Inn &amp; Suites Kennett Square Brandywine Valley</b> ... 610-444-8995 <i>Lodging - Hotels/Motels</i>	<b>Hartefeld National Golf Club</b> ..... 610-268-8800 <i>Golf Club - Private - Banquet Hall</i>
<b>County of Chester - Clerk of Courts</b> .. 610-344-6135 <i>Government</i>	<b>Family Promise of Southern Chester County</b> ..... 610-444-0400 <i>Non-Profit</i>	<b>Harvest Ridge Winery</b> ..... 484-915-2190 <i>Banquet Facility</i>
<b>County of Chester</b> ..... 610-344-6100 <i>Government</i>	<b>Felder Therapy and Mediation</b> ..... 484-844-5150 <i>Medical/Heath Care Service - Psychotherapy</i>	<b>Hearne Hardwoods Inc</b> ..... 610-932-7400 <i>Carpentry and Woodworking - Millwork</i>
<b>County of Chester - Open Space Preservation</b> ..... 610-344-5656 <i>Government</i>	<b>Fenstermacher &amp; Company, PC</b> ..... 610-444-1215 <i>Accountant - CPA</i>	<b>Hearth Kitchen</b> ..... 484-732-8320 <i>Restaurants and Food Service - Bar and Food</i>
<b>County of Chester Recorder of Deeds</b> ..... 610-344-6330 <i>Government</i>	<b>Financial House, Inc.</b> ..... 302-654-5451 <i>Financial Services - Financial Planning</i>	<b>Hilton Garden Inn Kennett Square/Longwood</b> ..... 610-444-9100 <i>Lodging - Hotels/Motels</i>
<b>Creative Financial Group</b> ..... 302-781-1088 <i>Financial Services - Wealth Management</i>	<b>First Ascent Design</b> ..... 302-709-1266 <i>Marketing - Advertising</i>	<b>Historic Kennett Square</b> ..... 610-444-8188 <i>Non-Profit</i>
<b>Crosser Natural Health</b> ..... 302-994-1010 <i>Chiropractor</i>	<b>First Choice Mortgage Advisors, LLC</b> ..... 610-345-9100 <i>Mortgage - Residential Mortgage</i>	<b>Hockessin Athletic Club</b> ..... 302-766-7482 <i>Fitness</i>
<b>D&amp;D Golder Incorporated</b> ..... 610-932-6305 <i>Well Service - Plumbing &amp; Well Service</i>	<b>Fischer Cunnane &amp; Associates Ltd</b> ... 610-431-1003 <i>Accountant - CPA</i>	<b>Holly Peters Oriental Rugs and Home LLC</b> ..... 610-444-6032 <i>Retail Store - Rugs</i>
<b>D'Amico Law, PC</b> ..... 610-444-4555 <i>Legal - Law Firm</i>	<b>Fit Mommy Method, LLC</b> <i>Health and Medical</i>	<b>Homes For Heroes - Kimberly Sheehan - Realtor Affiliate - Springer Realty Group</b> ..... 484-498-4000 <i>Real Estate - Residential Real Estate</i>
<b>Daniel D. Martin &amp; Associates LLC</b> .. 877-658-2884 <i>Legal - Law Firm</i>	<b>Fitchett Chiropractic</b> ..... 610-444-2878 <i>Medical/Heath Care Service - Chiropractors</i>	
<b>Dansko, Inc.</b> ..... 610-869-8335 <i>Retail Store - Shoes and Apparel</i>	<b>Flowers Baking Company of Oxford, Inc.</b> ..... 610-932-2300 <i>Manufacturer - Food Manufacturers</i>	
<b>DataConnectX</b> ..... 6103143880 <i>Computer Services - Managed IT Services</i>		

Continued on next page

# Membership Index

Continued from previous page

Hood's BBQ and Deli Inc..... 610-347-1670  
Restaurants and Food Service - Catering

Horty & Horty, P.A. .... 302-652-4194  
Accountant - CPA

HouseMaster Home Inspections ..... 610-269-1184  
Real Estate - Home Inspections

HRA Services, Inc..... 610-869-4494  
Business Services - Consulting Services

Innovative Financial Results, LLC..... 4846800745  
Accountant - CPA

Inspection Services Group, LLC..... 484-324-4500  
Home Inspection

Ira D. Binder, Esq., Attorney at Law.. 484-643-3325  
Legal - Legal Services

J. Taylor Consulting LLC ..... 610-299-9627  
Business Services - Consulting Services

Jackson ImmunoResearch Laboratories, Inc..... 610-869-4089  
Manufacturer - Medical Research Products

Jana Bannan Photography ..... 302-743-6291  
Photographer

Janney Montgomery Scott LLC..... 610-892-3315  
Financial Services

Jeff Sanders - Berkshire Hathaway Home Services out of Chadds Ford..... 570-412-4405  
Real Estate - Residential Real Estate

Jenner's Pond Inc. .... 610-869-6742  
Retirement Community

Jennersville Hospital - Tower Health..... 610-869-1001  
Medical/Health Care Service - Hospitals

Jennersville YMCA..... 610-869-9622  
Non-Profit

John K. Sturgis Builders, Inc. .... 610-268-8686  
Building Contractor

Northwestern Mutual ..... 302-416-3325  
Insurance - Financial Services

Johnny Saraceno - Weichert Realtors..... 610-675-5363  
Real Estate - Residential Real Estate

Jonathan P. Orose - RE/MAX EXCELLENCE Kennett Square ..... 610-347-1100  
Real Estate - Residential/ Commercial Real Estate Sales

K. L. Madron Well Drilling & Pump Installer ..... 610-444-4500  
Water - Well Digging

K9 Couture Pet Grooming ..... 610-925-5546  
Animal Services - Full Service

KarMar Realty Group, Inc. .... 610-459-8585  
Real Estate - Commercial Real Estate

Kauffman Gas ..... 610-593-5063  
Energy - Fuels

KBX Golden, LLC..... 610-444-3551  
Water - Water Treatment

Kendal-Crosslands Communities ..... 610-388-5660  
Retirement Community

Kennett Area Community Service ..... 610-925-3556  
Non-Profit

Kennett Area Park Authority - Anson B. Nixon Park ..... 610-444-1416  
Recreation/Entertainment - Gardens

Kennett Area Senior Center ..... 610-444-4819  
Non-Profit

Senior Center Kennett Area YMCA ..... 610-444-9622  
Non-Profit

Kennett Consolidated School District 610-444-6600  
School - High School

Kennett Fire Company No.1 ..... 610-444-4810  
Fire

Kennett Library ..... 610-444-2702  
Non-Profit

Kennett Square Eye Care ..... 610-444-5522  
Medical/Health Care Service - Optical

Kennett Square Golf and Country Club ..... 610-444-5239  
Golf Club - Private

Kennett Square Inn ..... 610-444-5687  
Restaurants and Food Service

Kennett Square Mini Storage ..... 610-444-9011  
Rental Center

Kennett Symphony of Chester County ..... 610-444-6363  
Performing Arts - Musical Performance

Kennett Township..... 610-388-1300  
Municipality

Keystone Transportation Funding Coalition ..... 717-439-1796  
Non-Profit

Kona Ice of Southern Chester County ..... 484-748-0085  
Ice - Shaved Ice

Konica Minolta Business Solutions U.S.A., Inc. .... 215-293-1410  
Business Solutions - Computer Services

Kuzo Funeral Home, Inc. .... 610-444-4116  
Funeral Service

KVIS & Coe Insurance Services ..... 610-459-4444  
Insurance

La Comunidad Hispana (LCH) - Health & Community Services..... 610-444-7550  
Medical/Health Care Service

La Comunidad Hispana (LCH) - Oxford Community Health Center ..... 610-444-7550  
Medical/Health Care Service

La Comunidad Hispana (LCH) - Women's Health Center ..... 610-444-7550  
Medical/Health Care Service

Lael Stables ..... 610-268-3303  
Equine - Stable

Lakeside Leadership Services ..... 484-319-1564  
Consulting - Leadership Development

Larmore Scarlett LLP..... 610-444-3737  
Legal - Law Firm

Laurel Valley Farms, Inc. .... 610-268-2074  
Wholesale Distributor - Mushrooms

Law Office of W. Marshall Pearson... 610-363-3700  
Legal - Attorney

Leading Edge Composites, Inc..... 610-932-9055  
Manufacturer

Leardi Family Dentistry..... 610-444-8744  
Medical/Health Care Service - Dentists

Left Moon Painting, LLC..... 484-757-5295  
Painter - Painting Residential

Lester Water, Inc..... 610-444-4660  
Water - Water Purification

LGB Properties, LLC ..... 610-925-3411  
Real Estate - Property Management

Lincoln University ..... 484-365-7400  
Education

Lisa Prince Aetna Medicare..... 484-678-8186  
Health and Medical - Medicare

Little Blooms Photography LLC..... 717-598-5567  
Photographer

Live4RJ ..... 484-639-7990  
Non-Profit

London Britain Township..... 610-255-0388  
Municipality

London Grove Township..... 610-345-0100  
Municipality

Londonderry Township..... 610-869-2138  
Municipality

Longwood Family Chiropractic ..... 484-888-3450  
Medical/Health Care Service - Chiropractors

Longwood Fire Company ..... 610-388-6880  
Fire

Longwood Gardens ..... 610-388-1000  
Recreation/Entertainment - Gardens

Longwood Rotary Club..... 610-316-3109  
Non-Profit

Longwood Veterinary Center..... 610-388-3388  
Veterinarian

Luther House I, II, III, IV ..... 610-869-4240  
Apartments - Senior and adult residence

Lyons Dougherty, LLC ..... 610-388-7311  
Legal - Law Firm

M. Cynthia Quinn, CPA..... 610-444-1040  
Accountant - CPA

M. LaBare Certified Arborist, LLC..... 610-388-2042  
Arborist

MacElree Harvey, Ltd..... 610-436-0100  
Legal - Law Firm

MAD pics ..... 610-656-6382  
Photographer

Madison Settlement Services - Brandywine Valley, LLC ..... 484-734-1810  
Real Estate - Title Company

Maffei Landscape Design LLC ..... 610-357-9700  
Landscaping - Landscape Design

Main Line Today..... 610-325-4630  
Marketing - Advertising

Martin Appliance ..... 717-786-7373  
Retail Store - Appliances

Martin Luther King, Jr. COMMUNITY of the Greater Kennett Area ..... 215-820-1164  
Non-Profit

Martin's Financial Consulting Group 610-444-8312  
Financial Services - Financial Planning

Mary Lou DiFrancesco CPA ..... 610-345-3000  
Accountant - CPA

Maternal and Child Health Consortium of Chester County ..... 610-235-4237  
Non-Profit

Matt Grieco Consulting, LLC ..... 484-459-6217  
Consulting

McGrory, Inc. .... 610-444-1512  
Interior Design - Kitchen and Bath

Melton Architects..... 610-444-8538  
Architect

Mendenhall Inn, Hotel and Conference Center..... 610-388-1181  
Restaurants and Food Service - Banquet Facilities

Meridian Bank..... 484-540-9575  
Financial Institution - Bank

Michael Moyer, State Farm Agent.... 610-444-5454  
Insurance - Home and Auto

MidAtlantic Farm Credit..... 888-339-3334  
Mortgage

Mighty Writers ..... 267-239-0899  
Non-Profit



<b>Mitchell Mechanical / M2 Welding ...</b> 610-932-5002 <i>Welding, Welder - Service and Sales</i>	<b>Paychex Inc. ....</b> 610-650-8100 <i>Business Services - Payroll Services and HR Solutions</i>	<b>Project C.U.R.E. ....</b> 610-345-0410 <i>Non-Profit</i>
<b>Mobac, Inc. ....</b> 610-444-3490 <i>Building Contractor</i>	<b>PCS ....</b> 302-456-9500 <i>Computer Services - Managed IT Services</i>	<b>PromoGrill.....</b> 877-232-6493 <i>Business Services - Promotional Products &amp; Items</i>
<b>Modern Massage Works ....</b> 610-444-5884 <i>Personal Services - Massage Therapy</i>	<b>Pegasus Technologies LLC ....</b> 610-444-8256 <i>Computer Services - Managed IT Services</i>	<b>PSX Inc. ....</b> 610-444-8210 <i>Business Services - Security</i>
<b>Mushroom Central Supply, Inc.....</b> 610-268-2211 <i>Mushrooms - Mushroom Supplies/Service</i>	<b>Penn Township.....</b> 610-869-9620 <i>Municipality</i>	<b>Pure Living by Kim .....</b> 484-354-2905 <i>Beauty</i>
<b>My Benefit Advisor, LLC.....</b> 610-537-1377 <i>Insurance - Group and Individual Medical, Dental, Life and Disability</i>	<b>Pennsbury Township .....</b> 610-388-7323 <i>Municipality</i>	<b>R &amp; D Heating &amp; Cooling, Inc. ....</b> 610-444-6421 <i>Heating and Air Conditioning</i>
<b>Nawn and Company, CPA's, Ltd. ....</b> 610-993-3100 <i>Accountant - CPA</i>	<b>Pennsylvania .....</b> 610-444-1050 <i>Equine</i>	<b>Radley Run Country Club.....</b> 610-793-1660 <i>Golf Club - Private</i>
<b>Needham's Mushroom Farms, Inc....</b> 610-869-9735 <i>Mushrooms - Mushroom Farms/Companies</i>	<b>Pennsylvania Lieutenant Governor - John Fetterman.....</b> 717-787-3300 <i>Government - Government Officials</i>	<b>Rapid Mortgage Company NMLS# 126872.....</b> 610-388-4440 <i>Mortgage - Residential Mortgage</i>
<b>Neuchatel Chocolates .....</b> 610-932-2706 <i>Retail Store - Food</i>	<b>Pennsylvania Manufacturers' Association .....</b> 717-232-0737 <i>Non-Profit</i>	<b>RE/MAX Excellence - Michael &amp; Tammy Duering .....</b> 610-347-1100 <i>Real Estate - Residential Real Estate</i>
<b>New Garden Flying Field.....</b> 610-268-2619 <i>Transportation</i>	<b>Pennsylvania Office of the Governor - Commission For Women .....</b> 717-787-5825 <i>Government</i>	<b>Realty One Group.....</b> 610-696-4600 <i>Real Estate</i>
<b>New Garden Township .....</b> 610-268-2907 <i>Municipality</i>	<b>Pennsylvania Office of the Governor - Commission on Latino Affairs.....</b> 717-787-5825 <i>Government</i>	<b>Recreation Resource USA .....</b> 610-444-4402 <i>Distributor - Recreation</i>
<b>New London Counseling Center .....</b> 484-746-3112 <i>Counseling - Individual and Family</i>	<b>Pennsylvania Office of the Governor - Tom Wolf.....</b> 717-787-2500 <i>Government</i>	<b>Regester Associates, Inc. ....</b> 610-444-5554 <i>Engineering - Land Development</i>
<b>New London Township .....</b> 610-869-8658 <i>Municipality</i>	<b>Pennsylvania Public Utility Commission.....</b> 717-787-4301 <i>Electrical</i>	<b>Reino's Design Print Mail .....</b> 484-527-8000 <i>Printing</i>
<b>New York Life Insurance Company ...</b> 302-379-0838 <i>Insurance</i>	<b>Pennsylvania State Police.....</b> 610-268-2022 <i>Law Enforcement</i>	<b>Reins of Life .....</b> 610-274-3300 <i>Non-Profit</i>
<b>Next Home, LP.....</b> 610-220-7024 <i>Real Estate - Investments</i>	<b>Pennsylvania State Representative Christina Sappye.....</b> 484-200-8264 <i>Government - Government Officials</i>	<b>Riley Riper Hollin &amp; Colagreco Attorneys at Law .....</b> 610-458-4400 <i>Legal - Law Firm</i>
<b>Nicholas Anthony Salon &amp; Day Spa, PA.....</b> 610-444-7222 <i>Personal Services - Beauty</i>	<b>Pennsylvania State Representative John A. Lawrence .....</b> 610-869-1602 <i>Government - Government Officials</i>	<b>Ritas of Kennett Square.....</b> 610-925-0500 <i>Food</i>
<b>Northbrook Marketplace .....</b> 610-793-1210 <i>Banquet Facility</i>	<b>Pennsylvania State Senator Andrew E. Dinniman .....</b> 610-692-2112 <i>Government - Government Officials</i>	<b>RNJ Plaques and Engraving LLC .....</b> 610-932-4763 <i>Business Services</i>
<b>Office Depot Business Solutions .....</b> 484-354-3845 <i>Office Supplies</i>	<b>Perna &amp; Abracht, LLC.....</b> 610-444-0933 <i>Legal - Law Firm</i>	<b>Robert Curran &amp; Associates .....</b> 610-316-3109 <i>Consulting</i>
<b>Office Elf, LLC.....</b> 610-467-1353 <i>Accounting - Bookkeeping Services</i>	<b>Peter Lumber Company .....</b> 610-444-2727 <i>Retail Store - Home Improvement</i>	<b>Rosci Salon Da' Spa .....</b> 610-869-5533 <i>Spa - Day Spa and Salon-Full Service</i>
<b>Oliver Heating Cooling, Plumbing &amp; Electrical.....</b> 610-594-9444 <i>Plumbing - Plumbing Contractors</i>	<b>Petro Home Services.....</b> 610-745-6942 <i>Heating, Air Conditioning and Plumbing</i>	<b>S J Murphy's Home Inspections .....</b> 610-506-0689 <i>Home Inspection</i>
<b>On The Road 2 Health, LLC .....</b> 610-608-1240 <i>Personal Services - Wellness</i>	<b>Philadelphia/West Chester KOA.....</b> 610-486-0447 <i>Lodging - Campgrounds</i>	<b>S.A.V.E. ....</b> 610-925-0041 <i>Non-Profit</i>
<b>Operation Warm.....</b> 610-388-2500 <i>Non-Profit</i>	<b>Phillips Mushroom Farms.....</b> 610-925-0520 <i>Mushrooms - Mushroom Farms/Companies</i>	<b>SamNova, Inc. ....</b> 610-274-8214 <i>Business Services - Career Coach</i>
<b>Oxford Area Senior Center.....</b> 610-932-5244 <i>Non-Profit</i>	<b>Pike Creek Mortgage Services, Inc....</b> 302-892-2811 <i>Mortgage - Residential Mortgage</i>	<b>Sandra Massari, Realtor RE/MAX EXCELLENCE .....</b> 610-347-1100 <i>Real Estate - Residential Real Estate</i>
<b>Oxford Mainstreet, Inc. ....</b> 610-998-9494 <i>Non-Profit</i>	<b>Pillar Real Estate Advisors, LLC .....</b> 484-887-8202 <i>Real Estate - Commercial Real Estate</i>	<b>Sandy Yeatman - BHHS Fox and Roach Kennett Home Marketing Center .....</b> 610-444-9090 <i>Real Estate - Residential Real Estate</i>
<b>Oxford Plumbing &amp; Heating, Inc. ....</b> 610-932-9503 <i>Plumbing - Plumbing Contractors</i>	<b>Plantation Field Equestrian Events, Inc. ....</b> 302-547-0695 <i>Special Events</i>	<b>SCORE Chester and Delaware County.....</b> 610-344-6910 <i>Non-Profit</i>
<b>Oxford Print and Design.....</b> 614-406-5892 <i>Printing</i>	<b>Pocopson Township .....</b> 610-793-2151 <i>Municipality</i>	<b>SERVPRO of Kennett Square/Oxford. ....</b> 610-268-8620 <i>Clean-up/Disaster</i>
<b>P. Randall Eckman, DDS.....</b> 610-388-0223 <i>Medical/Heath Care Service - Dentists</i>	<b>Precision / Safeguard .....</b> 610-459-3658 <i>Printing</i>	<b>Share My Secret.....</b> 610-331-6936 <i>Personal Services - Wellness</i>
<b>PA Chamber of Business and Industry.....</b> 717-720-5471 <i>Business Services</i>	<b>Precision Door Service.....</b> 610-344-0730 <i>Home Improvement - Garage Doors</i>	<b>Shear Satisfaction .....</b> 610-268-8917 <i>Hair Care</i>
<b>Paisley Solutions .....</b> 610-444-2597 <i>Accounting - Bookkeeping Services</i>	<b>Pro-Active Muscle Therapy.....</b> 610-388-8000 <i>Personal Services - Massage Therapy</i>	<b>Sheridan Lawyers .....</b> 484-653-0774 <i>Legal - Law Firm</i>
<b>Pam Hesler and Associates Photography .....</b> 610-692-2740 <i>Photographer</i>		<b>Sigma Data Systems Inc.....</b> 302-453-8812 <i>Computer Services - Managed IT Services</i>
<b>Paradocx Vineyard, LLC.....</b> 610-350-6666 <i>Wine - Wine Making</i>		<b>SIL0 .....</b> 610-932-7500 <i>Non-Profit</i>
<b>Paramount Signs .....</b> 484-364-4834 <i>Business Services - Signs &amp; Signage</i>		
<b>PathStone Corporation.....</b> 610-925-5600 <i>Non-Profit</i>		

Continued on next page

# Membership Index

Continued from previous page

Sinton Air Conditioning & Heating Inc. .... 610-444-6002  
*Heating and Air Conditioning*

SOLitude Lake Management..... 484-727-8918  
*Environmental*

Southeastern Chester County Refuse Authority (SECCRA) ..... 610-869-2452  
*Waste Management - Landfill*

Southern Chester County Chamber of Commerce ..... 610-444-0774  
*Chamber of Commerce*

Southern Chester County EMS..... 610-910-3180  
*Emergency Services*

Southern Chester County Regional Police Department ..... 610-268-2907  
*Government*

Sovana Bistro ..... 610-444-5600  
*Restaurants and Food Service - Bar and Food*

Spanish Health Ministry Inc..... 610-444-3001  
*Health and Medical*

SPEAK Unlimited Inc..... 610-659-3145  
*Non-Profit*

Sperr's Fuel and Heating Co Inc..... 610-543-3747  
*Energy - Fuels*

SPK Custom Millwork ..... 484-459-3527  
*Carpentry and Woodworking - Millwork*

Spotts, Stevens and McCoy ..... 610-621-2000  
*Engineering - Civil and Environmental*

Stantec Consulting Services Inc. .... 610-840-2500  
*Engineering - Civil and Environmental*

State Street Pizza & Grill..... 610-444-4642  
*Restaurants and Food Service - Catering*

Stengel Welding, Inc..... 610-444-4110  
*Welding, Welder*

Stone Barn Inc. .... 610-347-2414  
*Restaurants and Food Service - Banquet Facilities*

Stroud Water Research Center..... 610-268-2153  
*Non-Profit*

Supporting Strategies | Brandywine Valley ..... 302-203-6256  
*Accounting - Bookkeeping Services*

Susan Gaughan - J. Mark Group..... 610-308-7326  
*Business Services - Promotional Products & Branded Merchandise*

Suzanne Barba Consulting, LLC..... 302-220-0090  
*Business Services - Consulting Services*

Systems & Solutions, Inc..... 302-740-7760  
*Business Services - Computer Systems*

Tamburrino Family Orthodontics..... 484-209-0563  
*Medical/Health Care Service*

Taqueria Moroleon ..... 610-268-3066  
*Restaurants and Food Service*

Taste Kennett Food Tours..... 484-734-0740  
*Recreation/Entertainment - Tourism*

Taylor Oil & Propane Inc..... 610-444-3810  
*Heating and Air Conditioning*

That's What She Said, Marketing & More..... 585-469-5593  
*Marketing Consultant*

The Bryn Mawr Trust Company..... 610-719-0427  
*Financial Institution - Bank*

The Country Butcher - Fine Foods, Inc. .... 610-444-5980  
*Restaurants and Food Service - Catering*

The Crime Victims' Center of Chester County, Inc. .... 610-692-1926  
*Non-Profit*

The Cyr Team - Keller Williams Real Estate ..... 484-259-7910  
*Real Estate - Residential Real Estate*

The Gables at Chadds Ford..... 610-388-7700  
*Restaurants and Food Service - Banquet Facilities*

The Garage Community & Youth Center ..... 610-444-6464  
*Non-Profit*

The Happy Self-Publisher ..... 302-419-7289  
*Publishing*

The Joelle Waterkotte Team at BHHS Fox & Roach..... 610-324-9148  
*Real Estate - Residential Real Estate*

The Land Conservancy for Southern Chester County ..... 610-347-0347  
*Non-Profit*

The Market at Liberty Place ..... 610-925-3411  
*Restaurants and Food Service*

The Mushroom Cap..... 610-444-8484  
*Retail Store - Gifts*

The Mushroom Festival, Inc..... 610-925-3373  
*Recreation/Entertainment - Festivals*

The Perfect Impression..... 610-444-9493  
*Business Services - Promotional Products & Items*

The Scotts Company ..... 610-268-3006  
*Wholesale Distributor*

The Tri-M Group, LLC..... 610-444-1000  
*Electrical*

Thrivent Financial ..... 717-542-3663  
*Non-Profit - Financial Planner*

TJM Professional Services, LLC ..... 484-489-0900  
*Data Security Compliance Advisors*

Toot Sweets ..... 610-467-1900  
*Retail Store - Candy Store*

Transportation Management Association of Chester County ..... 610-993-0911  
*Transportation*

Triple Fresh Market & Catering..... 610-384-5037  
*Catering Service - Food Service*

Truckers Insurance Services ..... 610-444-0800  
*Insurance*

True Access Capital (formerly First State Community Loan Fund)..... 302-652-6774  
*Non-Profit*

Tycor Benefit Administrators, Inc..... 610-251-0670  
*Insurance*

U. S. Army Recruiting Center..... 610-696-4014  
*Government*

U.S. Small Business Administration . 610-382-3062  
*Government*

UFinancial Group ..... 610-444-3344  
*Financial Services - Financial Planning*

Umbreit Wileczek & Associates, PC . 610-444-3222  
*Accountant - CPA*

Unionville Community Fair, Inc. .... 610-347-0970  
*Recreation/Entertainment - Festivals*

Unionville-Chadds Ford School District ..... 610-347-0970  
*School - High School*

United States Senator for Pennsylvania - Pat Toomey ..... 215-241-1090  
*Government - Government Officials*

United States Senator for Pennsylvania - Robert Casey ..... 717-231-7540  
*Government - Government Officials*

Univest Bank and Trust Company ..... 610-344-3049  
*Financial Services*

Upland Country Day School ..... 610-444-7744  
*School - Private School*

USI Insurance Services ..... 610-620-5117  
*Insurance - Group and Individual Medical, Dental, Life and Disability*

V.P. Electrical Contracting Inc. .... 610-268-3725  
*Electrical*

Vanessa Ross Cakes..... 610-467-1800  
*Restaurants and Food Service - Catering*

Victory Brewing Company..... 484-730-1870  
*Restaurants and Food Service*

Viking Power Products Co..... 610-255-4030  
*Energy*

VisionCorps..... 717-205-4117  
*Medical/Health Care Service - Optical*

W. L. Gore & Associates, Inc. .... 302-292-4570  
*Manufacturer*

WARFEL Construction Company ..... 484-329-7200  
*Building Contractor - Commercial New Construction*

Warriors On The Water LTD ..... 717-314-2800  
*Non-Profit*

Waywood Beverage Co., Inc. .... 610-444-5222  
*Retail Store - Beverage/Spirits*

WCHE..... 610-692-3131  
*Media - Radio*

We Got Code ..... 484-502-6666  
*Internet Service*

Welcome Neighbor LLC ..... 610-358-0580  
*Marketing*

West Marlborough Township..... 610-383-5986  
*Municipality*

West Nottingham Township..... 610-932-4072  
*Municipality*

Whisman Giordano & Associates, LLC ..... 302-266-0202  
*Accountant - CPA*

Willow Tree Hospice ..... 610-444-8733  
*Home Health Care - Adult and Senior Care*

Wings for Success..... 610-644-6323  
*Non-Profit*

Wm. P. McGovern, Inc..... 610-444-5797  
*Sewage - Septic Systems*

Worldwide Travel Associates, Inc. .... 610-268-3711  
*Travel*

Write-Well Handwriting Clinics ..... 610-932-9511  
*Personal Services - Wellness*

WSFS Bank ..... 610-925-5000  
*Financial Institution - Bank*

Wyncote Golf Club ..... 610-932-8900  
*Golf Club - Public - Restaurant*

Yerkes Insurance Inc. .... 610-869-4065  
*Insurance*

YESCO Sign & Lighting / HES Sign Services ..... 302-232-2100  
*Electrical*

Zena Florist..... 484-720-8122  
*Florist*

Zommick McMahon Commercial Real Estate ..... 610-359-1100  
*Real Estate*





# Southern Chester County Chamber of Commerce Business Directory

## Accountant - CPA

**B-103 Corporation**  
610-388-2800

**Baker Tilly Virchow Krause, LLP**  
302-442-4607  
<http://www.bakertilly.com>

**Barsz Gowie Amon & Fultz, LLC**  
610-388-7800  
<http://barszgowie.com/>

**Belfint, Lyons & Shuman Certified Public Accountants**  
302-225-0600  
[www.belfint.com](http://www.belfint.com)

**Bumpers & Company, Certified Public Accountants**  
302-798-3300  
<http://www.bumpersco.com>

**Fenstermacher & Company, PC**  
610-444-1215  
[www.fandco.com](http://www.fandco.com)

**Fischer Cunnane & Associates Ltd**  
610-431-1003  
[www.fischercunnane.com](http://www.fischercunnane.com)

**Horty & Horty, PA.**  
302-652-4194  
[www.horty.com](http://www.horty.com)

**Innovative Financial Results, LLC**  
4846800745  
[www.InnovativeFinancialResults.com](http://www.InnovativeFinancialResults.com)

**M. Cynthia Quinn, CPA**  
610-444-1040  
<http://www.mcq1040.com>

**Mary Lou DiFrancesco CPA**  
610-345-3000  
<http://www.whitehorsefarm.com/cpa/cpa.htm>

**Nawn and Company, CPA's, Ltd.**  
610-993-3100  
<http://www.nawnco.com/>  
*See ad pg. 29*

**Umbreit Wileczek & Associates, PC**  
610-444-3222  
[www.uwacpa.com](http://www.uwacpa.com)

**Whisman Giordano & Associates, LLC**  
302-266-0202  
[www.whismangiordano.com](http://www.whismangiordano.com)  
*See ad pg. 39*

## Accounting - Bookkeeping Services

**Office Elf, LLC**  
610-467-1353  
[www.OfficeElf.net](http://www.OfficeElf.net)

## Paisley Solutions

610-444-2597  
[www.paisleysolutions.com](http://www.paisleysolutions.com)  
*See ad pg. 14*

**Supporting Strategies | Brandywine Valley**  
302-203-6256  
<https://www.supportingstrategies.com/brandywine-valley>

## Animal Services - Full Service

**Camp Bow Wow Avondale Pa**  
610-268-DOGS  
[campbowwow.com/avondale-pa](http://campbowwow.com/avondale-pa)

**K9 Couture Pet Grooming**  
610-925-5546  
[www.k9couturepetgrooming.com](http://www.k9couturepetgrooming.com)

## Apartments - Senior and Adult Residence

**Luther House I, II, III, IV**  
610-869-4240  
[www.lutherhousepa.org](http://www.lutherhousepa.org)

## Arborist

**M. LaBare Certified Arborist, LLC**  
610-388-2042  
<https://www.facebook.com/mlabareca/>

## Architect

**BERNARDON**  
610-444-2900  
[www.bernardon.com](http://www.bernardon.com)

**Ed Rahme Architect**  
610-453-7874  
[www.edrahme.com](http://www.edrahme.com)

**Melton Architects**  
610-444-8538  
[www.meltonarchitects.com](http://www.meltonarchitects.com)

## Athletics - Lacrosse

**Belles Lacrosse LLC**  
484-459-3591  
[www.belleslacclub.com](http://www.belleslacclub.com)

## Banquet Facility

**Harvest Ridge Winery**  
484-915-2190  
<http://harvestridgewinery.com>  
*See ad pg. 32*  
**Northbrook Marketplace**  
610-793-1210  
<http://https://northbrookmarketplace.com/>

## Beauty

**Pure Living by Kim**  
484-354-2905  
[www.kimberlymarucci.arbonne.com](http://www.kimberlymarucci.arbonne.com)

## Brewery

**Braeloch Brewing**  
610- 612-9242  
[www.braelochbrewing.beer](http://www.braelochbrewing.beer)

## Building Contractor - Commercial New Construction

**WARFEL Construction Company**  
484-329-7200  
[www.warfelcc.com](http://www.warfelcc.com)  
*See ad pg. 33*

## Building Contractor

**Clemens, Inc.**  
610-444-4404  
**John K. Sturgis Builders, Inc.**  
610-268-8686  
[www.sturgisbuilders.com](http://www.sturgisbuilders.com)

**Mobac, Inc.**  
610-444-3490  
[www.mobacinc.com](http://www.mobacinc.com)

## Business Services - Career Coach

**SamNova, Inc.**  
610-274-8214  
<http://www.samnovainc.com/>

## Business Services - Computer Systems

**Systems & Solutions, Inc.**  
302-740-7760  
[www.systemsinc.com](http://www.systemsinc.com)

## Business Services - Consulting Services

**ButlerBank Consulting**  
610-268-1276  
[www.butlerbank.net](http://www.butlerbank.net)  
**HRA Services, Inc.**  
610-869-4494  
[www.hraservices.com](http://www.hraservices.com)  
**J. Taylor Consulting LLC**  
610-299-9627  
[www.jtaylorconsulting.com](http://www.jtaylorconsulting.com)  
**Suzanne Barba Consulting, LLC**  
302-220-0090

## Business Services - Data Security Compliance Advisors

**BTR-Security**  
610-444-5295  
<http://www.BTR-Security.com>

## Business Services - Full Service Internet, IT, Systems, Network, Web and Voice

**Beacon Technologies, Inc.**  
610-444-9008  
[www.beaconnet.com](http://www.beaconnet.com)

## Business Services - Payroll Services and HR Solutions

**Paychex Inc.**  
610-650-8100  
<http://www.paychex.com>

## Business Services - Promotional Products & Branded Merchandise

**Susan Gaughan - J. Mark Group**  
610-308-7326  
[www.jmarkgroup.com](http://www.jmarkgroup.com)

## Business Services - Promotional Products & Items

**PromoGrill**  
877-232-6493  
[www.promogrill.com](http://www.promogrill.com)  
**The Perfect Impression**  
610-444-9493  
[www.theperfectimpressionco.com](http://www.theperfectimpressionco.com)

## Business Services - Security

**PSX Inc.**  
610-444-8210  
[www.psxgroup.com](http://www.psxgroup.com)

## Business Services - Signs & Signage

**Brand It Signs & Graphics, LLC**  
610-444-2020  
[www.Branditsigns.com](http://www.Branditsigns.com)  
**compuSIGN.com**  
610-268-2290  
[www.compusign.com](http://www.compusign.com)  
**Paramount Signs**  
484-364-4834  
<http://www.paramountsign.com/>

## Business Services

**Atlantic Pension Services, Inc.**  
610-925-5554  
[www.atlanticpensionservices.com](http://www.atlanticpensionservices.com)

Continued on next page

**PA Chamber of Business and Industry**  
717-720-5471

**RNJ Plaques and Engraving LLC**  
610-932-4763

### Carpentry and Woodworking - Millwork

**Hearne Hardwoods Inc**  
610-932-7400  
www.hearnehardwoods.com

**SPK Custom Millwork**  
484-459-3527

### Catering Service - Food Service

**Triple Fresh Market & Catering**  
610-384-5037  
http://www.triplefresh.net

### Chamber of Commerce

**Southern Chester County Chamber of Commerce**  
610-444-0774  
www.sccccc.com

### Chiropractor

**Crosser Natural Health**  
302-994-1010  
www.crossernaturalhealth.com

### Cleaning - Commercial Cleaning

**Green Solution Building Services, LLC**  
610-345-5468  
greensolutionusa.com

### Clean-up/Disaster

**SERVPRO of Kennett Square/Oxford**  
610-268-8620  
http://www.servprokennettsquareoxford.com/

### Computer Services - Managed IT Services

**DataConnectX**  
6103143880  
https://dataconnectx.com

**PCS**  
302-456-9500  
www.helpmepcs.com

**Pegasus Technologies LLC**  
610-444-8256  
www.pegtec.com  
*See ad pg. 17*

**Sigma Data Systems Inc.**  
302-453-8812  
https://www.sigmadatainc.com

### Computer Services

**Dorset Connects**  
484-845-1600  
http://www.dorsetconnects.com

### Consulting - Leadership Development

**Lakeside Leadership Services**  
484-319-1564  
https://www.lakesideleadership.org

### Consulting

**Matt Grieco Consulting, LLC**  
484-459-6217

**Robert Curran & Associates**  
610-316-3109  
https://robertmcurran.com/

### Contractor

**BSS Contractors, LLC**  
610-345-1316

### Counseling - Individual and Family

**New London Counseling Center**  
484-746-3112  
www.NewLondonCounselingCenter.com

### Data Security Compliance Advisors

**TJM Professional Services, LLC**  
484-489-0900  
https://tjmphprofessional.com

### Distributor - Recreation

**Recreation Resource USA**  
610-444-4402  
http://www.recreation-resource.com

### Education

**Foundation for Free Enterprise Education**  
814-833-9576  
www.pfew.org

**Lincoln University**  
484-365-7400  
www.lincoln.edu

### Electrical

**Pennsylvania Public Utility Commission**  
717-787-4301  
www.puc.state.pa.us

**The Tri-M Group, LLC**  
610-444-1000  
www.tri-mgroup.com  
*See ad pg. 4*

**V.P. Electrical Contracting Inc.**  
610-268-3725

**YESCO Sign & Lighting / HES Sign Services**  
302-232-2100  
www.yesco.com/westchester/

### Emergency Services

**Southern Chester County EMS**  
610-910-3180  
www.sccems.org

### Energy - Energy Consulting

**Affinity Energy Management**  
302-218-8920  
www.AffinityEnergy.net

### Energy - Fuels

**Kauffman Gas**  
610-593-5063  
www.kauffmangas.com

**Sperr's Fuel and Heating Co Inc.**  
610-543-3747  
www.sperrs.com

### Energy

**AT&T**  
720-308-3071

**Exelon Generation**  
610-765-7061  
www.exeloncorp.com

**Viking Power Products Co.**  
610-255-4030  
www.vikingpowerproducts.com

### Engineering - Civil and Environmental

**ARRO Consulting, Inc.**  
484-999-6150  
www.thearrogroup.com

**Spotts, Stevens and McCoy**  
610-621-2000  
*See ad pg. 35*

**Stantec Consulting Services Inc.**  
610-840-2500  
www.stantec.com  
*See ad pg. 44*

### Engineering - Land Development

**Advanced GeoServices Corporation**  
610-840-9100  
http://www.advancedgeoservices.com/

**Register Associates, Inc.**  
610-444-5554  
www.registerassociates.com

### Engineering

**Gilmore & Associates, Inc.**  
610-444-9006  
http://www.gilmore-assoc.com

### Environmental

**Brownfield Science & Technology, Inc.**  
610-593-5500  
www.bstweb.com

**SOLitude Lake Management**  
484-727-8918  
http://www.solitudelakemanagement.com/

### Equine - Stable

**Lael Stables**  
610-268-3303

### Equine

**Pennsylvania Horse Breeders Association**  
610-444-1050  
www.pabred.com

### Farms/Farmers - Orchard

**Glen Willow Orchards**  
610-268-8743  
https://www.facebook.com/GlenWillowLLC

### Financial Institution - Bank

**BB&T Bank - Avon Grove**  
610-563-2696  
www.bbt.com

**BB&T Bank - Kennett Square**  
610-444-8526  
www.bbt.com

**BB&T Bank - Longwood**  
610-444-8350  
www.bbt.com

**BB&T Bank - New Garden East**  
610-708-3038  
www.bbt.com

**BB&T Bank - Oxford**  
484-881-4851  
www.bbt.com

**BB&T Bank - Oxford South**  
610-932-5440  
www.bbt.com

**BB&T Bank - Oxford Third**  
610-932-9295  
www.bbt.com

**BB&T Bank - West Grove**  
610-806-5011  
www.bbt.com

**Coatesville Savings Bank**  
610-932-7756  
www.coatesvillesavings.com

**Fulton Bank Brandywine Division**  
610-918-8814  
www.fultonbank.com

**Meridian Bank**  
484-540-9575  
www.MeridianBanker.com

**S&T Bank**  
610-444-4350  
www.stbank.com



**The Bryn Mawr Trust Company**  
610-719-0427  
www.bmtc.com  
**WSFS Bank**  
610-925-5000  
www.wsfsbank.com

#### Financial Institution - Credit Union

**Citadel Federal Credit Union**  
610-380-7011  
<http://www.citadelbanking.com/>  
**Franklin Mint Federal Credit Union - Kennett Square**  
610-335-1915  
<http://www.fmfcu.org>

#### Financial Services - Financial Planning

**Edward Jones Investments**  
610-444-5220  
**Financial House, Inc.**  
302-654-5451  
www.financialhouse.com  
**Martin's Financial Consulting Group**  
610-444-8312  
<http://www.ameripriseadvisors.com/bronwyn.x.martin/>  
**UFinancial Group**  
610-444-3344  
www.ufinancialteam.com

#### Financial Services - Wealth Management

**Christine Gordon - Merrill Lynch**  
610-594-1177  
<https://www.ml.com/>  
**Creative Financial Group**  
302-781-1088  
www.1creative.com  
*See ad pg. 15*

#### Financial Services

**Diamond State Financial Group**  
302-366-0366  
<http://www.dsfg.com>  
**DiMatteo Financial Group, Inc.**  
610-388-7125  
www.dimatteofinancialgroup.com  
**Janney Montgomery Scott LLC**  
610-892-3315  
www.seranomcomsey.com  
**Univest Bank and Trust Company**  
610-344-3049  
<http://www.univest.net>

#### Fire

**Kennett Fire Company No.1**  
610-444-4810  
<http://www.firestation24.com/>

**Longwood Fire Company**  
610-388-6880  
www.longwoodfireco.com

#### Fitness

**Hockessin Athletic Club**  
302-766-7482  
www.HAChealthclub.com

#### Florist

**Zena Florist**  
484-720-8122  
<http://zenaflorist.com/>

#### Food

**Ritas of Kennett Square**  
610-925-0500

#### Funeral Service

**Kuzo Funeral Home, Inc.**  
610-444-4116  
www.kuzoandfoulkfh.com

#### Golf Club - Private - Banquet Hall

**Hartefeld National Golf Club**  
610-268-8800  
www.hartefeld.com

#### Golf Club - Private

**Kennett Square Golf and Country Club**  
610-444-5239  
www.ksgcc.com

**Radley Run Country Club**  
610-793-1660  
www.radleyruncountryclub.com

#### Golf Club - Public - Restaurant

**Wyncote Golf Club**  
610-932-8900  
www.wyncote.com  
*See ad pg. 35*

#### Government - Government Officials

**Pennsylvania Office of the Governor Tom Wolf**  
717-787-2500  
www.governor.state.pa.us

**Pennsylvania Office of the Governor - Commission For Women**  
717-787-5825

**Pennsylvania Office of the Governor - Commission on Latino Affairs**  
717-787-5825  
<https://www.governor.pa.gov/lieutenant-governor/>

**Pennsylvania Lieutenant Governor - John Fetterman**  
717-787-3300

**Pennsylvania State Representative Christina Sappey**  
484-200-8264

**Pennsylvania State Representative John A. Lawrence**  
610-869-1602  
www.replawrence.com

**Pennsylvania State Senator Andrew E. Dinniman**  
610-692-2112  
www.senatordinniman.com

**United States Senator for Pennsylvania - Pat Toomey**  
215-241-1090  
<http://www.toomey.senate.gov>

**United States Senator for Pennsylvania - Robert Casey**  
717-231-7540  
<http://www.casey.senate.gov>

#### Government

**Chester County Agricultural Development Council**  
610-344-6285  
www.chesco.org

**County of Chester - Clerk of Courts**  
610-344-6135  
<https://www.chesco.org/202/Clerk-of-Courts>

**County of Chester Commissioners Office**  
610-344-6100  
www.chesco.org

**County of Chester - Open Space Preservation**  
610-344-5656  
www.chesco.org/openspace

**County of Chester Recorder of Deeds**  
610-344-6330  
www.chesco.org/recorder

**Governor's Southeast Regional Office**  
215-560-2640  
www.governor.state.pa.us

**U. S. Army Recruiting Center**  
610-696-4014  
<http://www.goarmy.com>

**U.S. Small Business Administration**  
610-382-3062  
www.sba.gov

#### Graphic Design - Branding

**DesignDesign Inc.**  
610-444-8868  
www.designdesignonline.com

#### Hair Care

**Shear Satisfaction**  
610-268-8917  
Shearsatisfaction.com

#### Health Care: Consumer Directed Health Care Services

**ConnectYourCare**  
610-869-3289  
www.connectyourcare.com

#### Health and Medical - Medicare

**Lisa Prince Aetna Medicare**  
484-678-8186

#### Health and Medical

**Fit Mommy Method, LLC**  
www.Fitmommymethod.com  
**Spanish Health Ministry Inc.**  
610-444-3001  
<https://spanishhealthministry.org/>

#### Heating and Air Conditioning - Refrigeration

**Goodwin's Refrigeration LLC**  
610-255-5100

#### Heating and Air Conditioning

**Anthony Zunino, Inc.**  
610-268-0201  
www.anthonyzuninoinc.com  
**Chadds Ford Climate Control, Inc.**  
610-388-9333  
[www.chaddsfordclimatecontrol.com](http://www.chaddsfordclimatecontrol.com)  
*See ad pg. 3*  
**R & D Heating & Cooling, Inc.**  
610-444-6421  
www.rdhvac.com  
*See ad pg. 25*

**Sinton Air Conditioning & Heating Inc.**  
610-444-6002  
<http://www.sintonair.com>  
**Taylor Oil & Propane Inc.**  
610-444-3810  
www.tayloroilandpropane.com

#### Heating, Air Conditioning and Plumbing

**Petro Home Services**  
610-745-6942  
<https://www.petro.com/>

#### Heating, Air Conditioning, Plumbing & Electric

**Chadds Ford Complete Services, LLC**  
484-770-8261  
www.cfcomplete.com

*Continued on next page*

## Home Health Care - Adult and Senior Care

**Willow Tree Hospice**  
610-444-8733

<http://www.willowtreehospice.com>

## Home Improvement - Garage Doors

**Door & Gate Co. LLC**  
302-295-3669

[www.doorandgateusa.com](http://www.doorandgateusa.com)

**Precision Door Service**  
610-344-0730

<http://precisiondoorsoutheastpa.com>

## Home Improvement

**Design By Daphne, LLC**  
302-354-4158

[Designbydaphne.com](http://Designbydaphne.com)

## Home Inspection

**Inspection Services Group, LLC**  
484-324-4500

[www.isgroup-llc.com](http://www.isgroup-llc.com)

**S J Murphy's Home Inspections**  
610-506-0689

[www.sjmurphys.com](http://www.sjmurphys.com)

## Home Services - Maintenance

**A Hand For All Seasons, LLC**  
484-467-4836

## Home Services - Security

**Chesco Security, Inc.**  
610-268-3923

[www.chescosecurity.com](http://www.chescosecurity.com)

## Ice - Shaved Ice

**Kona Ice of Southern Chester County**  
484-748-0085

[www.kona-ice.com](http://www.kona-ice.com)

## Insurance - Group and Individual Medical, Dental, Life and Disability

**Allen Insurance Group**  
1-800-486-1244

[www.alleninsurance.com](http://www.alleninsurance.com)

**Colonial Life - West Chester**  
484-356-7644

<http://www.coloniallife.com>

**My Benefit Advisor, LLC**  
610-537-1377

[www.usiaffinity.com](http://www.usiaffinity.com)

**USI Insurance Services**  
610-620-5117

[www.usi.com](http://www.usi.com)

## Insurance - Home and Auto

**Alchemy Insurance**  
484-999-2101

[www.alchemyinsurance.com](http://www.alchemyinsurance.com)

*See ad pg. 17*

**Beardsley Agency/Farmers**  
484-200-7511

[www.farmersagent.com/jbeardsley](http://www.farmersagent.com/jbeardsley)

**Garcia-Taylor Insurance Agency Inc.**  
610-932-4935

[www.nationwide.com/garciatayloragency](http://www.nationwide.com/garciatayloragency)

**Michael Moyer, State Farm Agent**  
610-444-5454

[www.moyeragency.com](http://www.moyeragency.com)

*See ad pg. 29*

## Insurance

**Allstate Insurance Company - The Roselli Agency**  
610-444-0300

<http://allstateagencies.com/broselli/>  
Welcome/

**F. Frederick Breuninger & Son Insurance, Inc.**  
610-384-1980

[www.Binsured.com](http://www.Binsured.com)

*See ad pg. 19*

**KVIS & Coe Insurance Services**  
610-459-4444

[www.kviscoe.com](http://www.kviscoe.com)

*See ad pg. 11*

**New York Life Insurance Company**  
302-379-0838

<http://www.newyorklife.com>

**Truckers Insurance Services**  
610-444-0800

[www.trkins.com](http://www.trkins.com)

**Tycor Benefit Administrators, Inc.**  
610-251-0670

<http://www.tycorbenefit.com>

**Yerkes Insurance Inc.**  
610-869-4065

[www.yerkesinsurance.com](http://www.yerkesinsurance.com)

## Interior Design - Kitchen and Bath

**McGrory, Inc.**  
610-444-1512

[www.mcgroryinc.com](http://www.mcgroryinc.com)

Internet Service - Web Design

*See ad pg. 23*

## Internet Service

**We Got Code**  
484-502-6666

[www.wegotcode.com](http://www.wegotcode.com)

## Landscaping - Landscape Design

**Garden Square Landscaping, Inc.**  
610-444-0207

[www.Gardensquarelandscaping.com](http://www.Gardensquarelandscaping.com)

**Maffei Landscape Design LLC**  
610-357-9700

<http://www.danilomaffei.com>

## Landscaping - Lawn Care

**Emerald Green Lawns**

302-836-6909

[www.emeraldgreenlawns.com](http://www.emeraldgreenlawns.com)

## Law Enforcement

**Pennsylvania State Police**

610-268-2022

<http://www.psp.state.pa.us>

**Southern Chester County Regional Police Department**

610-268-2907

<http://www.sccrpd.org>

## Legal - Attorney

**Andris Law**

610-585-1256

<https://www.andrislaw.com/>

**Law Office of W. Marshall Pearson**

610-363-3700

[www.extonlaw.com](http://www.extonlaw.com)

## Legal - Law Firm

**Buckley, Brion, McGuire & Morris LLP**  
610-436-4400

<http://www.buckleyllp.com>

**Carosella & Associates, P.C.**

610-431-3300

<http://www.carosella.com>

**Clarion Law, LLC**

484-948-1436

<http://www.clarionlaw.net>

**Cohen Seglias Pallas Greenhall & Furman PC**

610-869-3600

[www.cohenseglias.com](http://www.cohenseglias.com)

**D'Amico Law, PC**

610-444-4555

[www.damicolawpc.com](http://www.damicolawpc.com)

**Daniel D. Martin & Associates LLC**

877-658-2884

<http://www.danielmartinlaw.com>

**Eichman Law, PLLC**

484-734-0378

[www.eichmanlawgroup.com](http://www.eichmanlawgroup.com)

**Larmore Scarlett LLP**

610-444-3737

[www.larmorescarlett.com](http://www.larmorescarlett.com)

**Lyons Dougherty, LLC**

610-388-7311

[www.lyonsdougherty.com](http://www.lyonsdougherty.com)

**MacElree Harvey, Ltd.**  
610-436-0100

<http://www.macelree.com>

**Perna & Abracht, LLC**  
610-444-0933

<http://www.pa4law.com/>

**Riley Riper Hollin & Colagreco Attorneys at Law**

610-458-4400

<http://www.rrhc.com>

**Sheridan Lawyers**

484-653-0774

[www.sheridanlawyers.com](http://www.sheridanlawyers.com)

## Legal - Legal Services

**Ira D. Binder, Esq., Attorney at Law**  
484-643-3325

*See ad pg. 34*

## Locksmith

**Becker Locksmith Services, Inc.**  
610-444-1323

[www.beckerlocksmithservices.com](http://www.beckerlocksmithservices.com)

## Lodging - Campgrounds

**Camp Saginaw**

888-477-CAMP

[www.campsaginaw.com](http://www.campsaginaw.com)

**Philadelphia/West Chester KOA**

610-486-0447

[www.philadelphiakoa.com](http://www.philadelphiakoa.com)

## Lodging - Hotels/Motels

**Fairfield Inn & Suites Kennett Square Brandywine Valley**

610-444-8995

[www.brandywinemariott.com](http://www.brandywinemariott.com)

**Hampton Inn & Suites Chadds Ford**

610-358-9540

<http://hamptoninn3.hilton.com/en/hotels/pennsylvania/hampton-inn-and-suites-chadds-ford-CFORDHX/index.html>

**Hilton Garden Inn Kennett Square/Longwood**

610-444-9100

<http://www.kennettsquare.hgi.com>

## Manufacturer - Food Manufacturers

**Flowers Baking Company of Oxford, Inc.**

610-932-2300

[www.Flowersfoods.com](http://www.Flowersfoods.com)

## Manufacturer - Medical Research Products

**Jackson ImmunoResearch Laboratories, Inc.**

610-869-4089

[www.jacksonimmuno.com](http://www.jacksonimmuno.com)



### Manufacturer

**Leading Edge Composites, Inc.**  
610-932-9055

[www.lec-composites.com](http://www.lec-composites.com)

**W. L. Gore & Associates, Inc.**  
302-292-4570  
[www.gore.com](http://www.gore.com)

### Marketing - Advertising

**First Ascent Design**  
302-709-1266

<https://firstascentdesign.com>

**Main Line Today**  
610-325-4630  
[mainlinetoday.com](http://mainlinetoday.com)

### Marketing - Consultant

**Bright Orange Thread**  
302-250-2339

<http://www.brightorangethread.com>

**That's What She Said,  
Marketing & More**  
585-469-5593

[www.thatsthatshepa.com](http://www.thatsthatshepa.com)

### Marketing

**Welcome Neighbor LLC**  
610-358-0580

<http://www.welcomeneighborpa.com>

### Media - Magazines

**Chester County Women's Journal**  
302-236-1435

<http://www.thewomensjournal.com>

### Media - Newspapers/Publications

**Ad Pro, Inc. - Chester County Press**  
610-869-5553

[www.chestercounty.com](http://www.chestercounty.com)

**Chadds Ford Live**  
610-212-3639

[www.chaddsfordlive.com](http://www.chaddsfordlive.com)

### Media - Radio

**WCHE**

610-692-3131

[www.wche1520.com](http://www.wche1520.com)  
Medical/Heath care Service

### Chiropractors

**Chiropractic Services, P.A.**  
610-932-9061

[www.chiropracticcenteroxfordpa.com](http://www.chiropracticcenteroxfordpa.com)

**Corrective Chiropractic**  
302-234-1115

<http://www.correctivechiro.net>

**Fitchett Chiropractic**  
610-444-2878

[www.fitchettchiropractic.com](http://www.fitchettchiropractic.com)

### Longwood Family Chiropractic

484-888-3450

[www.longwoodchiro.com](http://www.longwoodchiro.com)

### Medical/Heath Care Service - Dentists

**Albert J. Schmitt DMD, PC**  
610-444-6300

[www.doctorschmitt.com](http://www.doctorschmitt.com)

### Baccellieri Family Dentistry LLP

610-444-0208

[www.bfdentistry.com](http://www.bfdentistry.com)

**Leardi Family Dentistry**  
610-444-8744

[www.LEARDIDENTAL.com](http://www.LEARDIDENTAL.com)

**P. Randall Eckman, DDS**  
610-388-0223

[eckmandds.com](http://eckmandds.com)

### Medical/Heath Care Service - Hospitals

**Chester County Hospital**  
610-732-6930

[www.chestercountyhospital.org](http://www.chestercountyhospital.org)

*See ad pg. 61*

### Coatesville VA Medical Center

610-384-7711

<https://www.coatesville.va.gov>

### Jennersville Hospital - Tower Health

610-869-1001

<https://jennersville.towerhealth.org/>

### Medical/Heath Care Service - Nursing Care

**Balmoral**

**Medical Case Management, LLC**  
215-480-1451

### Medical/Heath Care Service - Nursing Homes/Rehab Facilities

**Genesis**

610-444-6350

[www.geneshcc.com](http://www.geneshcc.com)

### Medical/Heath Care Service - Optical

**Kennett Square Eye Care**

610-444-5522

[www.kennettsquareeyecare.com/](http://www.kennettsquareeyecare.com/)

**VisionCorps**

717-205-4117

<http://www.visioncorps.net/>

### Medical/Heath Care Service - Pharmacies

**Boothwyn Pharmacy**

800-476-7496

<http://www.boothwynpharmacy.com>

### Medical/Heath Care Service - Physicians

**Core Family Practice**

610-612-9283

[www.corefamilypractice.com](http://www.corefamilypractice.com)

### Medical/Heath Care Service - Psychotherapy

**Felder Therapy and Mediation**

484-844-5150

[www.feldertherapy.com](http://www.feldertherapy.com)

### Medical/Heath Care Service

**La Comunidad Hispana (LCH) - Health & Community Services**

610-444-7550

<https://lacomunidadhispana.org/health-center/>

**La Comunidad Hispana (LCH) - Oxford Community Health Center**

610-444-7550

[www.lacomunidadhispana.org](http://www.lacomunidadhispana.org)

**La Comunidad Hispana (LCH) - Women's Health Center**

610-444-7550

<https://lacomunidadhispana.org/womens-health-center/>

**Tamburrino Family Orthodontics**

484-209-0563

[www.tfortho.com](http://www.tfortho.com)

### Mortgage - Residential Mortgage

**Concord Home Mortgage**

610-306-7929

<https://www.concordhm.com>

**First Choice Mortgage Advisors, LLC**

610-345-9100

[www.kpittsmortgage.com](http://www.kpittsmortgage.com)

*See ad pg. 26*

**Pike Creek Mortgage Services, Inc.**

302-892-2811

[www.pat.pikecreekloans.com](http://www.pat.pikecreekloans.com)

*See ad pg. 24*

**Rapid Mortgage Company**

NMLS# 126872

610-388-4440

[www.rapidmortgagekennettsquare.com](http://www.rapidmortgagekennettsquare.com)

### Mortgage

**MidAtlantic Farm Credit**

888-339-3334

[www.mafc.com](http://www.mafc.com)

### Municipality

**Borough of Avondale**

610-268-8501

<http://www.avondaleboro.net>

**Borough of Kennett Square**

610-444-6020

[www.kennett-square.pa.us](http://www.kennett-square.pa.us)

**Borough of Oxford**

610-932-2500

<http://www.oxfordboro.org>

**Borough of West Grove**

610-869-2792

[www.westgroveborough.org](http://www.westgroveborough.org)

**East Marlborough Township**

610-444-0725

<http://www.eastmarlborough.org>

**Elk Township**

610-255-0634

<http://www.elktownship.org>

**Franklin Township**

610-255-5212

<http://www.franklintownship.us>

**Kennett Township**

610-388-1300

[www.kennett.pa.us](http://www.kennett.pa.us)

**London Britain Township**

610-255-0388

<http://www.londonbritain-township-pa.gov>

**London Grove Township**

610-345-0100

[www.londongrove.org](http://www.londongrove.org)

**Londonderry Township**

610-869-2138

<http://www.londonderrytownship.org>

**New Garden Township**

610-268-2907

[www.newgarden.org](http://www.newgarden.org)

**New London Township**

610-869-8658

<http://www.newlondonwp.net/>

**Penn Township**

610-869-9620

<http://www.penntownship.us>

**Pennsbury Township**

610-388-7323

<http://www.pennsbury.pa.us>

**Pocopson Township**

610-793-2151

<http://www.pocopson.org>

**West Marlborough Township**

610-383-5986

**West Nottingham Township**

610-932-4072

<http://www.wnt.gov.org>

### Mushrooms - Mushroom Farms/Companies

**American Mushroom Institute**

610-268-7483

<http://americanmushrooms.com/>

*Continued on next page*

**C.P. Yeatman & Sons, Inc./Mother Earth Organic Mushrooms**  
610-869-3595  
www.organicmushrooms.com

**Needham's Mushroom Farms, Inc.**  
610-869-9735  
www.pamushrooms.com/farmers

**Phillips Mushroom Farms**  
610-925-0520  
www.phillipsmushroomfarms.com

## Mushrooms - Mushroom Supplies/Service

**Mushroom Central Supply, Inc.**  
610-268-2211  
www.mushroomcentralonline.com

## Non-profit - Financial Planner

**Thrivent Financial**  
717-542-3663  
https://connect.thrivent.com/marcia-upton/

## Non-profit - Senior Center

**Kennett Area Senior Center**  
610-444-4819  
www.kennettseiorcenter.org

## Non-profit

**Better Business Bureau/Metro Philadelphia/Eastern PA Main Office**  
215-985-9313  
www.easternpa.bbb.org

**Brandywine Red Clay Alliance**  
610-793-1090  
http://www.bandywineredclay.org

**Canine Partners for Life**  
610-869-4902  
www.k94life.org

**CASA Youth Advocates, Inc.**  
610-565-2208  
www.chescocasa.org

**Chester County Community Foundation**  
610-696-8211  
http://www.chescocf.org

**Chester County Economic Development Council**  
610-458-5700  
www.ccedcpa.com

**Chester County Food Bank**  
610-873-6000  
www.chestercountyfoodbank.org

**Family Promise of Southern Chester County**  
610-444-0400  
www.familypromisescc.org

**Good Neighbors Home Repair**  
610-444-1860  
www.goodneighborshomerepair.org/

**Greenmore Farm Animal Rescue, Inc.**  
267-228-5035  
www.GreenmoreRescue.org

**Habitat For Humanity of Chester County**  
610-384-7993  
http://HFHCC.org

**Historic Kennett Square**  
610-444-8188  
www.historickennettsquare.com

**Jennersville YMCA**  
610-869-9622  
www.ymcagbw.org

**Kennett Area Community Service**  
610-925-3556  
http://www.kacsonline.net

**Kennett Area YMCA**  
610-444-9622  
https://www.ymcagbw.org/locations/kennett-branch  
**See ad pg. 16**

**Kennett Library**  
610-444-2702  
www.kennettpubliclibrary.org

**Keystone Transportation Funding Coalition**  
717-439-1796  
https://keystonetransportation.org/

**Live4RJ**  
484-639-7990  
http://www.live4rj.com

**Longwood Rotary Club**  
610-316-3109  
WWW.LONGWOODROTARY.COM  
**See ad pg. 30**

**Martin Luther King, Jr. Community of the Greater Kennett Area**  
215-820-1164  
http://www.mlkcommunity.org/

**Maternal and Child Health Consortium of Chester County**  
610-235-4237  
http://www.ccmchc.org

**Mighty Writers**  
267-239-0899  
www.mightywriters.org

**Operation Warm**  
610-388-2500  
www.operationwarm.org

**Oxford Area Senior Center**  
610-932-5244  
http://oxfordseniors.org/index.htm

**Oxford Mainstreet, Inc.**  
610-998-9494  
www.DowntownOxfordPA.org

**PathStone Corporation**  
610-925-5600  
https://pathstone.org/

**Pennsylvania Manufacturers' Association**  
717-232-0737  
http://pamanufacturers.org/

**Project C.U.R.E.**  
610-345-0410  
http://www.projectcure.org/

**Reins of Life**  
610-274-3300  
http://www.reinsoflife.com

**S.A.V.E.**  
610-925-0041  
www.savepa.org

**SCORE Chester and Delaware County**  
610-344-6910  
https://chesterdelco.score.org/

**SILO**  
610-932-7500  
www.oxfordsilo.com

**SPEAK Unlimited Inc.**  
610-659-3145  
www.PaPremiseAlert.com

**Stroud Water Research Center**  
610-268-2153  
https://stroudcenter.org/

**The Crime Victims' Center of Chester County, Inc.**  
610-692-1926  
www.cvcofcc.org

**The Garage Community & Youth Center**  
610-444-6464  
www.garageyouthcenter.org

**The Land Conservancy for Southern Chester County**  
610-347-0347  
http://www.tlcforscc.org

**True Access Capital (formerly First State Community Loan Fund)**  
302-652-6774  
http://firststateloan.org/

**Warriors On The Water LTD**  
717-314-2800  
www.warriorsonthewaterltd.com

**Wings for Success**  
610-644-6323  
www.wingsforsuccess.org

## Office Supplies

**Office Depot Business Solutions**  
484-354-3845

## Painter - Painting Commercial/ Residential

**CertaPro Painters of Western Chester County**  
484-283-5003  
http://western-chester-county.certapro.com

## Painter - Painting Residential

**Left Moon Painting, LLC**  
484-757-5295  
LeftMoonPainting.com

## Performing Arts - Musical Performance

**Kennett Symphony of Chester County**  
610-444-6363  
www.kennettsymphony.org

## Personal Services - Barber

**Burton's Barber Shop, Established 1892**  
610-444-9964

## Personal Services - Beauty

**Nicholas Anthony Salon & Day Spa, PA.**  
610-444-7222  
www.nicholasanthonysalon.com/

## Personal Services - Massage Therapy

**Modern Massage Works**  
610-444-5884  
www.modernmassageworks.com

**Pro-Active Muscle Therapy**  
610-388-8000  
http://pro-activemuscletherapy.com

## Personal Services - Wellness

**On The Road 2 Health, LLC**  
610-608-1240  
https://www.facebook.com/OnTheRoad2Health/

**Share My Secret**  
610-331-6936  
www.deniseciancia.com

**Write-Well Handwriting Clinics**  
610-932-9511  
www.goldenlightwellnesscenter.com  
**See ad pg. 34**

## Photographer

**Jana Bannan Photography**  
302-743-6291  
Www.bannanphotography.com

**Little Blooms Photography LLC**  
717-598-5567  
www.littlebloomsphotography.com

**MAD pics**  
610-656-6382  
www.madpics.myportfolio.com

**Pam Hesler and Associates Photography**  
610-692-2740  
www.PamHeslerPhoto.com



### Plumbing - Plumbing Contractors

**Alps Plumbing Services**  
610-368-6388

[www.alpsplumbing.com](http://www.alpsplumbing.com)

**Oliver Heating Cooling,  
Plumbing & Electrical**  
610-594-9444

[www.oliverheatcool.com](http://www.oliverheatcool.com)

**Oxford Plumbing & Heating, Inc.**  
610-932-9503  
<http://calloxford.com/>  
*See ad pg. 31*

### Printing

**Godder Printing & Graphic Design**  
610-869-4475

[www.godderprinting.com](http://www.godderprinting.com)

**Oxford Print and Design**  
614-406-5892

<https://www.facebook.com/oxfordprint-anddesign/>

**Precision / Safeguard**  
610-459-3658

<http://www.precisiononline.net>

**Reino's Design Print Mail**  
484-527-8000  
[www.reinos.net](http://www.reinos.net)

### Publishing

**The Happy Self-Publisher**  
302-419-7289

<http://www.happyselfpublisher.com>

### Real Estate - Commercial Real Estate

**KarMar Realty Group, Inc.**  
610-459-8585

[www.karmarrealty.com](http://www.karmarrealty.com)

**Pillar Real Estate Advisors, LLC**  
484-887-8202

[www.pillarrealestateadvisors.com](http://www.pillarrealestateadvisors.com)

### Real Estate - Home Inspections

**HouseMaster Home Inspections**  
610-269-1184

[westchester.housemaster.com](http://westchester.housemaster.com)

### Real Estate - Investments

**Next Home, LP**  
610-220-7024

### Real Estate - Property Management

**Einstein Property Management, LLC**  
484-643-2024

**LGB Properties, LLC**  
610-925-3411

<http://www.lgbproperties.com>

### Real Estate - Residential Real Estate

**Al George - RE/MAX Town & Country**  
610-202-2942

<http://www.algeorge.net>

**Ethel Ann Murphy -  
BHHS Fox & Roach Realtors**  
610-368-9929

**Homes For Heroes -  
Kimberly Sheehan - Realtor Affiliate -  
Springer Realty Group**  
484-498-4000  
[www.homesforheroes.com/affiliate/kimberly-sheehan](http://www.homesforheroes.com/affiliate/kimberly-sheehan)

**Jeff Sanders - Berkshire Hathaway  
Home Services out of Chadds Ford**  
570-412-4405

**RE/MAX Excellence -  
Michael & Tammy Duering**  
610-347-1100  
[www.Dueringteam.com](http://www.Dueringteam.com)

**Sandra Massari,  
Realtor RE/MAX EXCELLENCE**  
610-347-1100  
[www.propertiesbysandra.com](http://www.propertiesbysandra.com)

**Sandy Yeatman -  
BHHS Fox and Roach Kennett Home  
Marketing Center**  
610-444-9090  
[www.sandyyeatman.com](http://www.sandyyeatman.com)

**The Cyr Team -  
Keller Williams Real Estate**  
484-259-7910  
[www.TheCyrTeam.com](http://www.TheCyrTeam.com)

**The Joelle Waterkotte Team at  
BHHS Fox & Roach**  
610-324-9148  
[www.teamwaterkotte.com](http://www.teamwaterkotte.com)

### Real Estate - Residential/ Commercial Real Estate Sales

**Beiler-Campbell Realtors**  
610-932-1000  
[www.beiler-campbell.com](http://www.beiler-campbell.com)

**Jonathan P. Orose -  
RE/MAX EXCELLENCE Kennett Square**  
610-347-1100

### Real Estate - Title Company

**Anvil Land Transfer Company**  
610-444-6800  
[www.beiler-campbell.net/anvil.htm](http://www.beiler-campbell.net/anvil.htm)

**Madison Settlement Services -  
Brandywine Valley, LLC**  
484-734-1810  
<https://madisonsettlements.com/office/kennett-square-pa>

### Real Estate

**Cabot-Kjellerup Realty Trust**  
610-869-2800

**Realty One Group**  
610-696-4600

<http://https://www.realtyonegroup.com/realestateagent/daniel-sweeney-13134596>

**Zommick McMahon  
Commercial Real Estate**  
610-359-1100  
<http://zmcre.com/>

### Recreation/Entertainment - Festivals

**The Mushroom Festival, Inc.**  
610-925-3373  
[www.mushroomfestival.org](http://www.mushroomfestival.org)

**Unionville Community Fair, Inc.**  
[www.ucfair.org](http://www.ucfair.org)

### Recreation/Entertainment - Gardens

**Kennett Area Park Authority - Anson  
B. Nixon Park**  
610-444-1416  
[www.ansonbnixonpark.org/](http://www.ansonbnixonpark.org/)

**Longwood Gardens**  
610-388-1000  
[www.longwoodgardens.org](http://www.longwoodgardens.org)  
*See ad pg. 2*

### Recreation/Entertainment - Tourism

**Chester County Conference &  
Visitors Bureau**  
484-840-7208

<http://www.brandywinevalley.com>

**Taste Kennett Food Tours**  
484-734-0740  
[www.tastekennett.com](http://www.tastekennett.com)

### Rental Center

**Kennett Square Mini Storage**  
610-444-9011  
[www.kennettsquareministorage.com](http://www.kennettsquareministorage.com)

### Restaurants and Food Service - Banquet Facilities

**Mendenhall Inn, Hotel and  
Conference Center**  
610-388-1181  
[www.mendenhallinn.com](http://www.mendenhallinn.com)

**Stone Barn Inc.**  
610-347-2414  
[www.thestonebarn.com](http://www.thestonebarn.com)

**The Gables at Chadds Ford**  
610-388-7700  
[www.thegablesatchaddsford.com](http://www.thegablesatchaddsford.com)

### Restaurants and Food Service - Bar and Food

**Byrsa Bistro**  
610-444-5050  
<https://kennett.byrsabistro.com/>

**Hearth Kitchen**  
484-732-8320  
<http://www.hearthkennettsquare.com/>

**Sovana Bistro**  
610-444-5600  
[www.sovanabistro.com](http://www.sovanabistro.com)

### Restaurants and Food Service - Catering

**Hood's BBQ and Deli Inc.**  
610-347-1670  
<http://www.hoodsbbq.com>

**State Street Pizza & Grill**  
610-444-4642  
[www.statestreetpizza.net](http://www.statestreetpizza.net)

**The Country Butcher - Fine Foods, Inc.**  
610-444-5980  
<http://www.countrybutchermarket.com/>

**Vanessa Ross Cakes**  
610-467-1800  
[www.vanessarosscakes.com](http://www.vanessarosscakes.com)

### Restaurants and Food Service

**Kennett Square Inn**  
610-444-5687  
[www.kennettinn.com](http://www.kennettinn.com)

**Taqueria Moroleon**  
610-268-3066  
[www.Taqueriamoroleonpa.com](http://www.Taqueriamoroleonpa.com)

**The Market at Liberty Place**  
610-925-3411  
[www.themarketatlibertyplace.com](http://www.themarketatlibertyplace.com)

**Victory Brewing Company**  
484-730-1870  
[www.victorybeer.com](http://www.victorybeer.com)

### Retail Store - Apparel, Accessories, Cosmetics, Footwear, Home Goods

**Gordmans**  
(610) 925-0622  
[www.gordmans.com](http://www.gordmans.com)

### Retail Store - Appliances

**Martin Appliance**  
717-786-7373  
<https://www.martinappliance.com/index.html>  
*See ad pg. 64*

### Retail Store - Beverage/Spirits

**Waywood Beverage Co., Inc.**  
610-444-5222  
<http://www.waywoodbeverage.com/>

*Continued on next page*

# Directory

Continued from previous page

## Retail Store - Candy Store

**Toot Sweets**  
610-467-1900  
tootsweetson3rd.com

## Retail Store - Food

**Neuchatel Chocolates**  
610-932-2706  
www.neuchatelchocolates.com

## Retail Store - Gifts

**The Mushroom Cap**  
610-444-8484  
www.themushroomcap.com

## Retail Store - Home Improvement

**Peter Lumber Company**  
610-444-2727  
www.peterlumber.com

## Retail Store - Rugs

**Holly Peters**  
**Oriental Rugs and Home LLC**  
610-444-6032  
www.hollypeters.com

## Retail Store - Shoes and Apparel

**Dansko, Inc.**  
610-869-8335  
www.dansko.com

## Retirement Community - Independent Living, Supportive Independent Living

**Friends Home in Kennett**  
610-444-2577  
www.friendshomeinkennett.org  
*See ad pg. 5*

## Retirement Community

**Jenner's Pond Inc.**  
610-869-6742  
www.jennerspond.org  
**Kendal-Crosslands Communities**  
610-388-5660  
www.kcc.kendal.org

## School - Charter School

**Avon Grove Charter School**  
484-667-5000  
agcharter.org

## School - Colleges and Universities

**Delaware County Community College**  
484-237-6406  
http://www.dccc.edu

## School - High School

**Avon Grove School District**  
610-869-2441  
www.avongrove.org

**Chester County Technical College High School Penneck's Bridge Campus**  
610-345-1800  
www.cciu.org/tchspennocksbridge  
*See ad pg. 7*

**Kennett Consolidated School District**  
610-444-6600  
www.kcsd.org

**Unionville-Chadds Ford School District**  
610-347-0970  
http://www.ucfsd.org/

## School - Private School

**Upland Country Day School**  
610-444-7744  
www.uplandcdds.org

## Senior Services

**Brandywine Concierge Senior Services**  
717-606-7281  
www.brandywineconcierge.com

## Sewage - Septic Systems

**Brandywine Septic Services, Inc.**  
610-869-0443  
www.brandywinesepptic.com  
**Wm. P. McGovern, Inc.**  
610-444-5797  
http://www.mcgovernseptic.com/

## Spa - Day spa and salon-full service

**Rosci Salon Da' Spa**  
610-869-5533  
http://www.roscisalondaspa.com

## Special Events

**Plantation Field Equestrian Events, Inc.**  
302-547-0695  
www.plantationfieldhorsetrials.com

## Transportation

**AGS International Forwarders Inc.**  
610-255-5400  
**New Garden Flying Field**  
610-268-2619  
www.newgardenflyingfield.com

**Transportation Management Association of Chester County**  
610-993-0911  
www.tmacc.org  
*See ad pg. 63*

## Travel

**Chadds Ford Travel**  
610-268-8680  
www.chaddsfordtravel.com  
**Connoisseur Travel, Ltd.**  
610-925-4690  
www.ksqtravels.com  
**Worldwide Travel Associates, Inc**  
610-268-3711  
www.worldwidetravelpa.com

## Veterinarian

**Chadds Ford Animal Hospital**  
610-388-2141  
http://www.chaddsfordanimalhospital.vetsuite.com  
**Longwood Veterinary Center**  
610-388-3388  
longwoodvetcenter.com

## Waste Management - Landfill

**Southeastern Chester County Refuse Authority (SECCRA)**  
610-869-2452  
www.SECCRA.org

## Water - Water Purification

**Lester Water, Inc.**  
610-444-4660  
www.lesterwater.com

## Water - Water Supply

**Aqua America**  
610-645-1019  
http://aquaamerica.com  
**Chester Water Authority**  
610-876-8185  
www.chesterwater.com

## Water - Water Treatment

**KBX Golden, LLC**  
610-444-3551  
www.kbxgolden.com

## Water - Well Digging

**K. L. Madron Well Drilling & Pump Installer**  
610-444-4500  
http://www.klmadron.com/

## Web Design

**DG Design**  
610-869-8561  
www.dgdesignonline.com

## Welding, Welder - Service and Sales

**Mitchell Mechanical / M2 Welding**  
610-932-5002  
https://www.m2welding.com/  
*See ad pg. 20*

## Welding, Welder

**Stengel Welding, Inc.**  
610-444-4110  
www.stengelwelding.com

## Well Service - Plumbing & Well Service

**D&D Golder Incorporated**  
610-932-6305  
https://www.ddgolderplumbingandwell-service.com/

## Wholesale Distributor - Mushrooms

**CF Fresh, LLC**  
(dba Country Fresh Mushrooms)  
610-268-3033  
www.cfmushroom.com  
**Laurel Valley Farms, Inc.**  
610-268-2074  
www.laurelvalleysoils.com

## Wholesale Distributor

**The Scotts Company**  
610-268-3006  
http://www.scotts.com

## Wine - Wine Making

**Paradocx Vineyard, LLC**  
610-350-6666  
www.paradocx.com  
*See ad pg. 38*

## Wine - Wine Tasting

**Chaddsford Winery, LTD**  
610-388-6221  
https://www.chaddsford.com/  
**Konica Minolta Business Solutions U.S.A., Inc.**  
215-293-1410  
www.kmbs.konicaminolta.us





**Something grand is happening here.**

For more than 125 years, we've been looking toward the future. Unafraid to embrace the unknown, always willing to bring our best to conquer the next challenge. As part of the region's #1 health system, Chester County Hospital is evolving, growing and changing, while keeping our uniquely compassionate care intact. Bringing expansive technological advancements and access to new treatment options, right here to you. It's one more reason why your life is worth Penn Medicine.

[ChesterCountyHospital.org](http://ChesterCountyHospital.org)



**Penn Medicine**  
Chester County Hospital



Brandywine Institute of Orthopaedics

## Non-Operative Treatment for Arthritis Pain

### Scott Ritterman, M.D. Board Certified Orthopaedic Surgeon

**SPECIALTIES:** Complex Fracture Care, Hip, Joint Replacement Surgery, Knee, Revision Joint Replacement Surgery, Osteoporosis Care, Pediatric Fracture Care, Sports Medicine



#### CLINICAL EXPERTISE

Joint Replacement Surgery, Revision Joint Replacement Surgery, Fracture Care

#### EDUCATION/TRAINING

Undergraduate – Lehigh University, Bethlehem, PA  
M.D. – The Chicago Medical School at Rosalind Franklin University, North Chicago, IL  
Internship – Rhode Island Hospital/Brown Medical School, Providence, RI  
Residency – Rhode Island Hospital/Brown Medical School, Providence, RI  
Fellowship – Rhode Island Hospital/Brown Medical School, Providence, RI – Orthopaedic Trauma  
Fellowship – Massachusetts General Hospital/Harvard Medical School, Boston, MA – Hip and Knee Reconstruction

#### CERTIFICATION

Board Eligible – American Board of Orthopaedic Surgery

#### PROFESSIONAL MEMBERSHIPS

AAOS – American Academy of Orthopaedic Surgeons  
AAHKS – American Association of Hip and Knee Surgeons  
OTA – Orthopaedic Trauma Association

#### INTERESTING FACT

Dr. Ritterman spends his free time skiing, hiking or enjoying other outdoor activities.

---

---

**APPOINTMENTS WITHIN 24 HOURS**  
610-792-9292 | [www.premierortho.com](http://www.premierortho.com)



Brandywine Institute of Orthopaedics  
Premier Orthopaedics at Lionville  
119 E Uwchlan Ave, Suite #100, Exton, PA 19341



Premier Orthopaedics at Brandywine Hospital  
213 Reeceville Rd, Ste #14, Coatesville, PA 19320





# NO CAR? NO PROBLEM.

**Chescobus – New and Improved for Southern Chester County!** In an effort to better serve our riders and the Southern Chester County community, Chescobus has redesigned the SCCOOT route, schedule and zone/fare structure. Working closely with a partner group of local social service agencies, we have streamlined the efficiency of the SCCOOT ride!

**We are traveling where you want to be!** The SCCOOT route provides easy access to destinations such as West Chester, Kennett Square, Oxford and Giant and Walmart Locations, Monday through Friday.

[WWW.CHESCOBUS.COM](http://WWW.CHESCOBUS.COM) | 610-993-0911

Funding Provided Through



*SCCOOT is a fixed-route bus service.*

# Southern Chester County Connections Magazine

Spring/Summer 2020  
www.scccc.com

**A Chester County Press Publication**

P.O. Box 150, Kelton, PA 19346  
*address corrections not required*

## INTRODUCING COVE

# The only dishwasher with Sub-Zero and Wolf in its DNA.



Cove is the only dishwasher that is built to the elegant, exacting standards of Sub-Zero and Wolf. Together, you will find these three kitchen specialists in the world's finest kitchens.



Cooking. Refrigeration. Dishwashing.

**BROWNSTOWN**  
4216 OREGON PIKE  
717-859-3131

**CLEONA**  
308 W. PENN AVENUE  
717-273-7555

**EPHRATA**  
1717 W. MAIN STREET  
717-733-7730

**MYERSTOWN**  
740 E. LINCOLN AVENUE  
717-866-7555

**QUARRYVILLE**  
2318 BEAVER VALLEY PIKE  
717-786-7373

**READING**  
4850 PERKIOMEN AVE  
610-401-0390



[www.martinwater.com](http://www.martinwater.com)

[www.martinsappliance.com](http://www.martinsappliance.com)

[www.martinfurniturepa.com](http://www.martinfurniturepa.com)

